

## Talin-1 antibody

Cat. No. GTX134635

Host	Rabbit
Clonality	Polyclonal
Isotype	IgG
Applications	WB, ICC/IF, IHC-P
Reactivity	Human, Mouse

## Package

100 µl, 25 µl

## PRODUCT

## Summary

Talin antibody recognizes the cytoskeletal component talin, a ~270 kDa protein involved in cell mechanotransduction that links the cytoskeleton to integrins. It forms an antiparallel homodimer and interacts with vinculin, actin, and integrins. Talin is incorporated very early in the cell-extracellular matrix (ECM) adhesion process.

## Applications

## Application Note

\*Optimal dilutions/concentrations should be determined by the researcher.

Suggested dilution	Recommended dilution
WB	1:1000
ICC/IF	Assay dependent
IHC-P	Assay dependent

Not tested in other applications.

**Calculated MW** 270 kDa. ([Note](#))

## Properties

Form	Liquid
Buffer	PBS, 20% Glycerol
Preservative	0.025% ProClin 300
Storage	Store as concentrated solution. Centrifuge briefly prior to opening vial. For short-term storage (1-2 weeks), store at 4°C. For long-term storage, aliquot and store at -20°C or below. Avoid multiple freeze-thaw cycles.
Concentration	0.54 mg/ml (Please refer to the vial label for the specific concentration.)
Immunogen	Recombinant protein encompassing a sequence within the center region of human Talin-1. The exact sequence is proprietary.
Purification	Purified by antigen-affinity chromatography.
Conjugation	Unconjugated



For full product information, images and publications, please visit our [website](#).

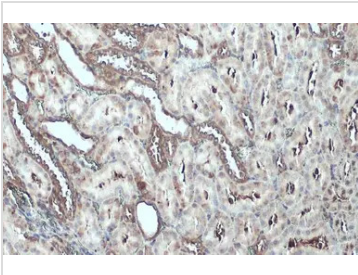
Date 2026 / 01 / 11 Page 1 of 2

For laboratory research use only. Not for any clinical, therapeutic, or diagnostic use in humans or animals. Not for animal or human consumption.

## Note

Purchasers shall not, and agree not to enable third parties to, analyze, copy, reverse engineer or otherwise attempt to determine the structure or sequence of the product.

## DATA IMAGES



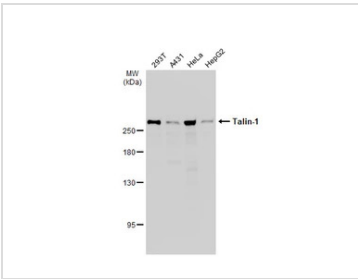
### GTx134635 IHC-P Image

Talin-1 antibody detects Talin-1 protein at cytoplasm by immunohistochemical analysis.

Sample: Paraffin-embedded mouse kidney.

Talin-1 stained by Talin-1 antibody (GTx134635) diluted at 1:500.

Antigen Retrieval: Citrate buffer, pH 6.0, 15 min

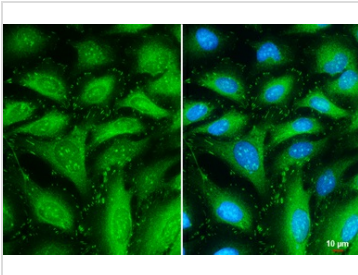


### GTx134635 WB Image

Various whole cell extracts (30 µg) were separated by 5% SDS-PAGE, and the membrane was blotted with

Talin-1 antibody (GTx134635) diluted at 1:1000. The HRP-conjugated anti-rabbit IgG antibody

(GTx213110-01) was used to detect the primary antibody.



### GTx134635 ICC/IF Image

Talin-1 antibody detects Talin-1 protein at cytoplasm and focal adhesion by immunofluorescent analysis.

Sample: HeLa cells were fixed in ice-cold MeOH for 5 min.

Green: Talin-1 stained by Talin-1 antibody (GTx134635) diluted at 1:1000.

Blue: Fluoroshield with DAPI (GTx30920).

Scale bar = 10 µm.



For full product information, images and publications, please visit our [website](#).