

Cytokeratin 19 antibody

Cat. No. GTX134696

Host	Rabbit
Clonality	Polyclonal
Isotype	IgG
Application	WB, ICC/IF, IHC-P
Reactivity	Human, Mouse

Package
100 µl, 25 µl

APPLICATION

Application Note

*Optimal dilutions/concentrations should be determined by the researcher.

Suggested dilution	Recommended dilution
WB	1:1000-1:10000
ICC/IF	Assay dependent
IHC-P	Assay dependent

Not tested in other applications.

Calculated MW 44 kDa. ([Note](#))

PROPERTIES

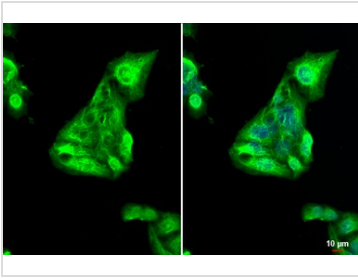
Form	Liquid
Buffer	PBS, 1% BSA, 20% Glycerol
Preservative	0.025% ProClin 300
Storage	Store as concentrated solution. Centrifuge briefly prior to opening vial. For short-term storage (1-2 weeks), store at 4°C. For long-term storage, aliquot and store at -20°C or below. Avoid multiple freeze-thaw cycles.
Concentration	0.43 mg/ml (Please refer to the vial label for the specific concentration.)
Immunogen	Carrier-protein conjugated synthetic peptide encompassing a sequence within the C-terminus region of human Cytokeratin 19. The exact sequence is proprietary.
Purification	Purified by antigen-affinity chromatography.
Conjugation	Unconjugated

Note For laboratory research use only. Not for any clinical, therapeutic, or diagnostic use in humans or animals. Not for animal or human consumption.

Purchasers shall not, and agree not to enable third parties to, analyze, copy, reverse engineer or otherwise attempt to determine the structure or sequence of the product.



For full product information, images and publications, please visit our [website](#).

DATA IMAGES

GTX134696 ICC/IF Image

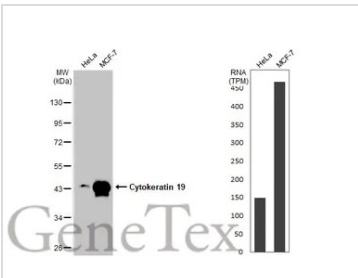
Cytokeratin 19 antibody detects Cytokeratin 19 protein at cytoskeleton by immunofluorescent analysis.

Sample: HepG2 cells were fixed in 4% paraformaldehyde at RT for 15 min.

Green: Cytokeratin 19 stained by Cytokeratin 19 antibody (GTX134696) diluted at 1:500.

Blue: Fluoroshield with DAPI (GTX30920).

Scale bar= 10μm.

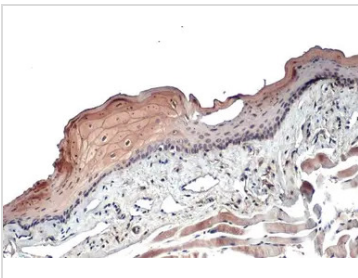

GTX134696 WB Image

Various whole cell extracts (30 μg) were separated by 10% SDS-PAGE, and the membrane was blotted with

Cytokeratin 19 antibody (GTX134696) diluted at 1:10000. The HRP-conjugated anti-rabbit IgG antibody

(GTX213110-01) was used to detect the primary antibody. Corresponding RNA expression data for the

same cell lines are based on Human Protein Atlas program.

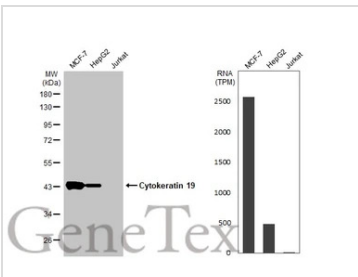

GTX134696 IHC-P Image

Cytokeratin 19 antibody detects Cytokeratin 19 protein at cell membrane by immunohistochemical analysis.

Sample: Paraffin-embedded mouse tongue.

Cytokeratin 19 stained by Cytokeratin 19 antibody (GTX134696) diluted at 1:500.

Antigen Retrieval: Citrate buffer, pH 6.0, 15 min


GTX134696 WB Image

Various whole cell extracts (30 μg) were separated by 10% SDS-PAGE, and the membrane was blotted with

Cytokeratin 19 antibody (GTX134696) diluted at 1:10000. The HRP-conjugated anti-rabbit IgG antibody

(GTX213110-01) was used to detect the primary antibody. Corresponding RNA expression data for the

same cell lines are based on Human Protein Atlas program.



For full product information, images and publications, please visit our [website](https://www.genetex.com).