

Histamine antibody

Cat. No. GTX134710

Host	Rabbit
Clonality	Polyclonal
Isotype	IgG
Application	ICC/IF, Dot, ELISA
Reactivity	Rat

Package
100 µl, 25 µl

APPLICATION

Application Note

*Optimal dilutions/concentrations should be determined by the researcher.

Suggested dilution	Recommended dilution
ICC/IF	1:100-1:1000
Dot	Assay dependent
ELISA	1:1000-1:10000

Not tested in other applications.

PROPERTIES

Form	Liquid
Buffer	PBS, 1% BSA, 20% Glycerol
Preservative	0.025% ProClin 300
Storage	Store as concentrated solution. Centrifuge briefly prior to opening vial. For short-term storage (1-2 weeks), store at 4°C. For long-term storage, aliquot and store at -20°C or below. Avoid multiple freeze-thaw cycles.
Concentration	0.43 mg/ml (Please refer to the vial label for the specific concentration.)
Immunogen	The immunogen used to generate this antibody corresponds to Histamine
Purification	Purified by antigen-affinity chromatography.
Conjugation	Unconjugated

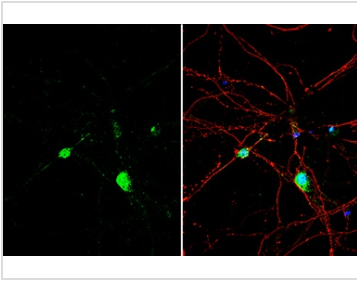
Note

For laboratory research use only. Not for any clinical, therapeutic, or diagnostic use in humans or animals. Not for animal or human consumption.

Purchasers shall not, and agree not to enable third parties to, analyze, copy, reverse engineer or otherwise attempt to determine the structure or sequence of the product.



For full product information, images and publications, please visit our [website](#).

DATA IMAGES

GTX134710 ICC/IF Image

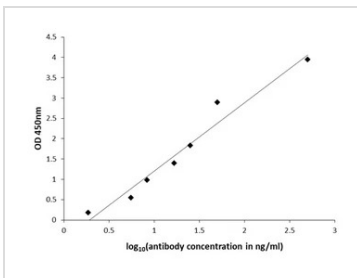
Histamine antibody detects Histamine protein by immunofluorescent analysis.

Sample: DIV9 rat E18 primary hippocampal neuron cells were fixed in 4% paraformaldehyde at RT for 15 min.

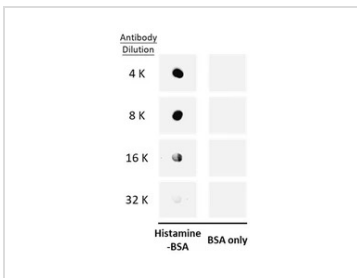
Green: Histamine stained by Histamine antibody (GTX134710) diluted at 1:500.

Red: Tau, stained by Tau antibody [GT287] (GTX634809) diluted at 1:500.

Blue: Fluoroshield with DAPI (GTX30920).


GTX134710 ELISA Image

ELISA plate is coated with 100 μ L of Histamine-carrier protein conjugate at 10 μ g/mL. The coated ligand is detected with Histamine antibody (GTX134710) at concentrations ranging from 440 ng/mL down to 1.6 ng/mL. Rabbit IgG antibody (HRP) (GTX213110-01) is diluted at 1:2,000 and used to detect the primary antibody.


GTX134710 Dot Image

Dot blot analysis of 100 ng BSA-conjugated Histamine, using Histamine antibody (GTX134710) at 1:4000, 1:8000, 1:16000 and 1:32000.



For full product information, images and publications, please visit our [website](https://www.genetex.com).