

# 5-Hydroxytryptophan antibody

**Cat. No. GTX134711**

<b>Host</b>	Rabbit
<b>Clonality</b>	Polyclonal
<b>Isotype</b>	IgG
<b>Application</b>	Dot, ELISA

**Package**  
100 µl, 25 µl

## APPLICATION

### Application Note

\*Optimal dilutions/concentrations should be determined by the researcher.

Suggested dilution	Recommended dilution
Dot	Assay dependent
ELISA	1:1000-1:10000

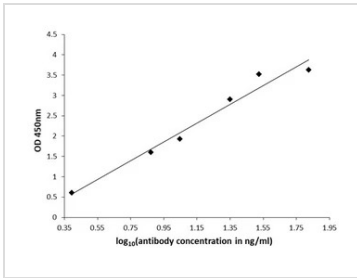
Not tested in other applications.

## PROPERTIES

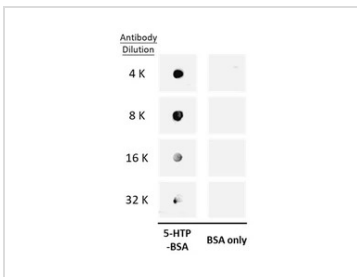
<b>Form</b>	Liquid
<b>Buffer</b>	PBS, 1% BSA, 20% Glycerol
<b>Preservative</b>	0.025% ProClin 300
<b>Storage</b>	Store as concentrated solution. Centrifuge briefly prior to opening vial. For short-term storage (1-2 weeks), store at 4°C. For long-term storage, aliquot and store at -20°C or below. Avoid multiple freeze-thaw cycles.
<b>Concentration</b>	0.63 mg/ml (Please refer to the vial label for the specific concentration.)
<b>Immunogen</b>	The immunogen used to generate this antibody corresponds to 5-Hydroxytryptophan
<b>Purification</b>	Purified by antigen-affinity chromatography.
<b>Conjugation</b>	Unconjugated
<b>Note</b>	For laboratory research use only. Not for any clinical, therapeutic, or diagnostic use in humans or animals. Not for animal or human consumption.  Purchasers shall not, and agree not to enable third parties to, analyze, copy, reverse engineer or otherwise attempt to determine the structure or sequence of the product.



For full product information, images and publications, please visit our [website](#).

**DATA IMAGES**

**GTX134711 ELISA Image**

ELISA plate is coated with 100  $\mu\text{L}$  of 5-hydroxytryptophan/5-HTP-carrier protein conjugate at 10  $\mu\text{g/mL}$ . The coated ligand is detected with 5-hydroxytryptophan/5-HTP antibody (GTX134711) at concentrations ranging from 630 ng/mL down to 2.3 ng/mL. Rabbit IgG antibody (HRP) (GTX213110-01) is diluted at 1:2,000 and used to detect the primary antibody.


**GTX134711 Dot Image**

Dot blot analysis of 100 ng BSA-conjugated 5-hydroxytryptophan/5-HTP, using 5-hydroxytryptophan/5-HTP antibody (GTX134711) at 1:4000, 1:8000, 1:16000 and 1:32000.



For full product information, images and publications, please visit our [website](https://www.genetex.com).