

3-Methoxytyramine antibody

Cat. No. GTX134712

Host	Rabbit
Clonality	Polyclonal
Isotype	IgG
Applications	Dot, ELISA
Reactivity	Species independent

Package

100 µl, 25 µl

PRODUCT

Antibody specificity was performed with a competitive ELISA test with the following compounds:

Summary

Compounds	Cross-reactivity ratio
3-Methoxytyramine-G-CP	1
Dopamine-G-CP	1/> 10,000
Levodopa-G-CP	1/> 10,000
Tyramine-G-CP	1/> 10,000
Norepinephrine-G-CP	1/> 10,000
Tryptamine-G-CP	1/> 10,000

G: Glutaraldehyde, CP: Carrier Protein (Gelatin).

Applications

Application Note

*Optimal dilutions/concentrations should be determined by the researcher.

Suggested dilution	Recommended dilution
Dot	Assay dependent
ELISA	1:1000-1:10000

Not tested in other applications.

Properties

Form	Liquid
Buffer	PBS, 1% BSA, 20% Glycerol
Preservative	0.025% ProClin 300
Storage	Store as concentrated solution. Centrifuge briefly prior to opening vial. For short-term storage (1-2 weeks), store at 4°C. For long-term storage, aliquot and store at -20°C or below. Avoid multiple freeze-thaw cycles.
Concentration	0.4 mg/ml (Please refer to the vial label for the specific concentration.)
Immunogen	The immunogen used to generate this antibody corresponds to 3-Methoxytyramine
Purification	Purified by antigen-affinity chromatography.



For full product information, images and publications, please visit our [website](#).

Conjugation

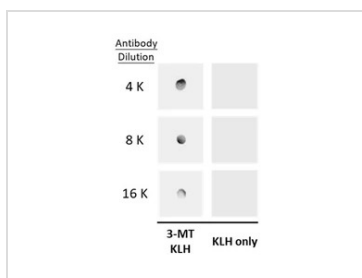
Unconjugated

Note

For laboratory research use only. Not for any clinical, therapeutic, or diagnostic use in humans or animals. Not for animal or human consumption.

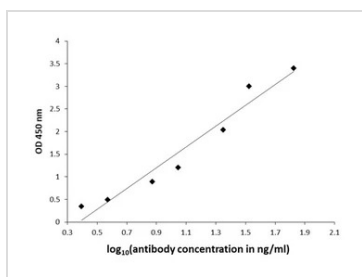
Purchasers shall not, and agree not to enable third parties to, analyze, copy, reverse engineer or otherwise attempt to determine the structure or sequence of the product.

DATA IMAGES



GTX134712 Dot Image

Dot blot analysis of 100 ng KLH-conjugated 3-methoxytyramine/3-MT, using 3-methoxytyramine/3-MT antibody (GTX134712) at 1:4000, 1:8000, and 1:16000.



GTX134712 ELISA Image

ELISA plate is coated with 100 µL of 3-methoxytyramine/3-MT-carrier protein conjugate at 10 µg/mL. The coated ligand is detected with 3-methoxytyramine/3-MT antibody (GTX134712) at concentrations ranging from 400 ng/mL down to 1.4 ng/mL. Rabbit IgG antibody (HRP) (GTX213110-01) is diluted at 1:2,000 and used to detect the primary antibody.



For full product information, images and publications, please visit our [website](#).