

## 3-Methoxytyramine antibody

**Cat. No. GTX134712**

<b>Host</b>	Rabbit
<b>Clonality</b>	Polyclonal
<b>Isotype</b>	IgG
<b>Applications</b>	Dot, ELISA
<b>Reactivity</b>	Species independent

**Package**  
100 µl, 25 µl

## PRODUCT

Antibody specificity was performed with a competitive ELISA test with the following compounds:

Compounds	Cross-reactivity ratio
3-Methoxytyramine-G-CP	1
Dopamine-G-CP	1/> 10,000
Levodopa-G-CP	1/> 10,000
Tyramine-G-CP	1/> 10,000
Norepinephrine-G-CP	1/> 10,000
Tryptamine-G-CP	1/> 10,000

G: Glutaraldehyde, CP: Carrier Protein (Gelatin).

## Applications

**Application Note**

\*Optimal dilutions/concentrations should be determined by the researcher.

Suggested dilution	Recommended dilution
Dot	Assay dependent
ELISA	1:1000-1:10000

Not tested in other applications.

## Properties

<b>Form</b>	Liquid
<b>Buffer</b>	PBS, 1% BSA, 20% Glycerol
<b>Preservative</b>	0.025% ProClin 300
<b>Storage</b>	Store as concentrated solution. Centrifuge briefly prior to opening vial. For short-term storage (1-2 weeks), store at 4°C. For long-term storage, aliquot and store at -20°C or below. Avoid multiple freeze-thaw cycles.
<b>Concentration</b>	0.4 mg/ml (Please refer to the vial label for the specific concentration.)
<b>Immunogen</b>	The immunogen used to generate this antibody corresponds to 3-Methoxytyramine
<b>Purification</b>	Purified by antigen-affinity chromatography.



For full product information, images and publications, please visit our [website](#).

Date 2026 / 04 / 03 Page 1 of 2

**Conjugation**

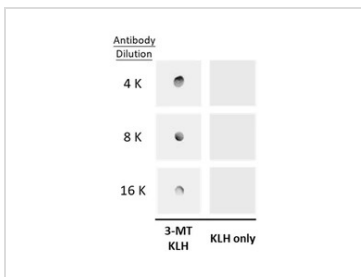
Unconjugated

For laboratory research use only. Not for any clinical, therapeutic, or diagnostic use in humans or animals. Not for animal or human consumption.

**Note**

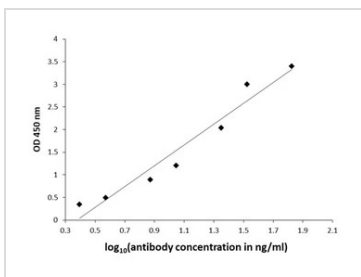
Purchasers shall not, and agree not to enable third parties to, analyze, copy, reverse engineer or otherwise attempt to determine the structure or sequence of the product.

DATA IMAGES



**GTX134712 Dot Image**

Dot blot analysis of 100 ng KLH-conjugated 3-methoxytyramine/3-MT, using 3-methoxytyramine/3-MT antibody (GTX134712) at 1:4000, 1:8000, and 1:16000.



**GTX134712 ELISA Image**

ELISA plate is coated with 100 µL of 3-methoxytyramine/3-MT-carrier protein conjugate at 10 µg/mL. The coated ligand is detected with 3-methoxytyramine/3-MT antibody (GTX134712) at concentrations ranging from 400 ng/mL down to 1.4 ng/mL. Rabbit IgG antibody (HRP) (GTX213110-01) is diluted at 1:2,000 and used to detect the primary antibody.



For full product information, images and publications, please visit our [website](#).