

Agmatine antibody

Cat. No. GTX134713

| | |
|--------------------|------------|
| Host | Rabbit |
| Clonality | Polyclonal |
| Isotype | IgG |
| Application | Dot, ELISA |

Package
100 µl, 25 µl

APPLICATION

Application Note

*Optimal dilutions/concentrations should be determined by the researcher.

| Suggested dilution | Recommended dilution |
|--------------------|----------------------|
| Dot | Assay dependent |
| ELISA | 1:1000-1:10000 |

Not tested in other applications.

PROPERTIES

| | |
|----------------------|--|
| Form | Liquid |
| Buffer | PBS, 20% Glycerol |
| Preservative | 0.025% ProClin 300 |
| Storage | Store as concentrated solution. Centrifuge briefly prior to opening vial. For short-term storage (1-2 weeks), store at 4°C. For long-term storage, aliquot and store at -20°C or below. Avoid multiple freeze-thaw cycles. |
| Concentration | 0.6 mg/ml (Please refer to the vial label for the specific concentration.) |
| Immunogen | The immunogen used to generate this antibody corresponds to Agmatine |
| Purification | Purified by antigen-affinity chromatography. |
| Conjugation | Unconjugated |

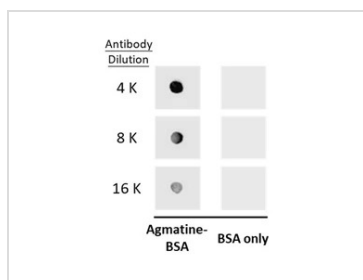
Note

For laboratory research use only. Not for any clinical, therapeutic, or diagnostic use in humans or animals. Not for animal or human consumption.

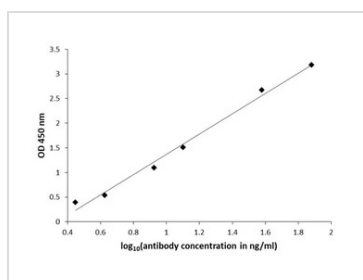
Purchasers shall not, and agree not to enable third parties to, analyze, copy, reverse engineer or otherwise attempt to determine the structure or sequence of the product.



For full product information, images and publications, please visit our [website](#).

DATA IMAGES

GTX134713 Dot Image

Dot blot analysis of 100 ng BSA-conjugated Agmatine, using Agmatine antibody (GTX134713) at 1:4000, 1:8000, and 1:16000.


GTX134713 ELISA Image

ELISA plate is coated with 100 μ L of Agmatine-carrier protein conjugate at 10 μ g/mL. The coated ligand is detected with Agmatine antibody (GTX134713) at concentrations ranging from 600 ng/mL down to 2.2 ng/mL. Rabbit IgG antibody (HRP) (GTX213110-01) is diluted at 1:2,000 and used to detect the primary antibody.



For full product information, images and publications, please visit our [website](https://www.genetex.com).