

beta-Hydroxy-GABA antibody

Cat. No. GTX134714

Host	Rabbit
Clonality	Polyclonal
Isotype	IgG
Applications	ICC/IF, Dot, ELISA
Reactivity	Species independent

Package

100 µl, 25 µl

PRODUCT

Antibody specificity was performed with a competitive ELISA test with the following compounds:

Summary

Compounds	Cross-reactivity ratio
β-Hydroxy-GABA-G-CP	1
Glycine-G-CP	1/> 10,000
β-Alanine-G-CP	1/> 10,000
Glutamine-G-CP	1/> 10,000
Glutamate-G-CP	1/> 10,000
Agmatine-G-CP	1/> 10,000

G: Glutaraldehyde, CP: Carrier Protein (Gelatin).

Applications

Application Note

*Optimal dilutions/concentrations should be determined by the researcher.

Suggested dilution	Recommended dilution
ICC/IF	1:100-1:1000
Dot	Assay dependent
ELISA	1:1000-1:10000

Not tested in other applications.

Properties

Form	Liquid
Buffer	PBS, 20% Glycerol
Preservative	0.025% ProClin 300
Storage	Store as concentrated solution. Centrifuge briefly prior to opening vial. For short-term storage (1-2 weeks), store at 4°C. For long-term storage, aliquot and store at -20°C or below. Avoid multiple freeze-thaw cycles.
Concentration	0.55 mg/ml (Please refer to the vial label for the specific concentration.)
Immunogen	The immunogen used to generate this antibody corresponds to beta-Hydroxy-GABA



For full product information, images and publications, please visit our [website](#).

Purification Purified by antigen-affinity chromatography.

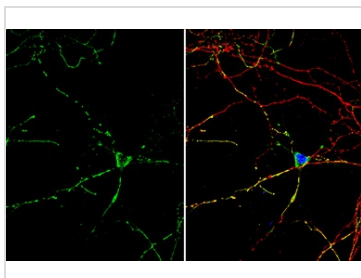
Conjugation Unconjugated

Note

For laboratory research use only. Not for any clinical, therapeutic, or diagnostic use in humans or animals. Not for animal or human consumption.

Purchasers shall not, and agree not to enable third parties to, analyze, copy, reverse engineer or otherwise attempt to determine the structure or sequence of the product.

DATA IMAGES



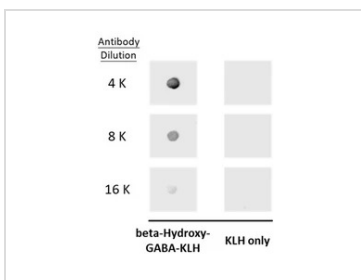
GTX134714 ICC/IF Image

beta-Hydroxy-GABA antibody detects beta-Hydroxy-GABA protein by immunofluorescent analysis. Sample: DIV9 rat E18 primary hippocampal neuron cells were fixed in 4% paraformaldehyde at RT for 15 min.

Green: beta-Hydroxy-GABA stained by beta-Hydroxy-GABA antibody (GTX134714) diluted at 1:500.

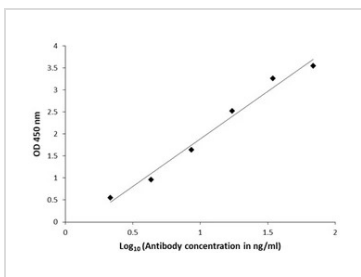
Red: Tau, stained by Tau antibody [GT287] (GTX634809) diluted at 1:500.

Blue: Fluoroshield with DAPI (GTX30920).



GTX134714 Dot Image

Dot blot analysis of 100 ng KLH-conjugated beta-hydroxy-GABA, using beta-hydroxy-GABA antibody (GTX134714) at 1:4000, 1:8000, and 1:16000.



GTX134714 ELISA Image

ELISA plate is coated with 100 μ L of beta-hydroxy-GABA-carrier protein conjugate at 10 μ g/mL. The coated ligand is detected with beta-hydroxy-GABA antibody (GTX134714) at concentrations ranging from 550 ng/mL down to 2.0 ng/mL. Rabbit IgG antibody (HRP) (GTX213110-01) is diluted at 1:2,000 and used to detect the primary antibody.



For full product information, images and publications, please visit our [website](https://www.genetex.com).