

## GPM6A antibody

Cat. No. GTX134740

Host	Rabbit
Clonality	Polyclonal
Isotype	IgG
Application	WB, IHC-P
Reactivity	Mouse, Rat

Package  
100 µl, 25 µl

## APPLICATION

## Application Note

\*Optimal dilutions/concentrations should be determined by the researcher.

Suggested dilution	Recommended dilution
WB	1:500-1:3000
IHC-P	1:100-1:1000

Not tested in other applications.

Calculated MW 31 kDa. ([Note](#))

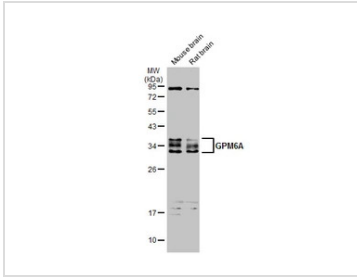
## PROPERTIES

Form	Liquid
Buffer	PBS, 20% Glycerol
Preservative	0.025% ProClin 300
Storage	Store as concentrated solution. Centrifuge briefly prior to opening vial. For short-term storage (1-2 weeks), store at 4°C. For long-term storage, aliquot and store at -20°C or below. Avoid multiple freeze-thaw cycles.
Concentration	1.87 mg/ml (Please refer to the vial label for the specific concentration.)
Immunogen	Synthetic peptide encompassing a sequence within the Intracellular domain of mouse GPM6A. The exact sequence is proprietary.
Purification	Purified by antigen-affinity chromatography.
Conjugation	Unconjugated
Note	For In vitro laboratory use only. Not for any clinical, therapeutic, or diagnostic use in humans or animals. Not for animal or human consumption.



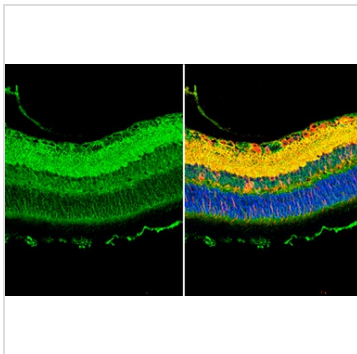
For full product information, images and publications, please visit our [website](#).

## DATA IMAGES



### GTx134740 WB Image

Various tissue extracts (50 µg) were separated by 12% SDS-PAGE, and the membrane was blotted with GPM6A antibody (GTx134740) diluted at 1:1000. The HRP-conjugated anti-rabbit IgG antibody (GTx213110-01) was used to detect the primary antibody.



### GTx134740 IHC-P Image

GPM6A antibody detects GPM6A protein at cell membrane and cytoplasm by immunohistochemical analysis.

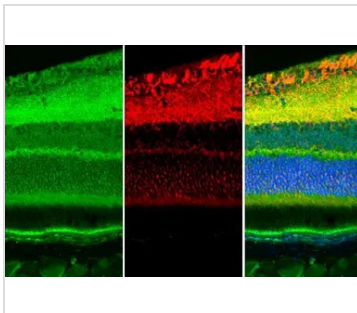
Sample: Paraffin-embedded mouse eye.

Green: GPM6A stained by GPM6A antibody (GTx134740) diluted at 1:250.

Red: beta Tubulin 3/ Tuj1, a cytoskeleton marker, stained by beta Tubulin 3/ Tuj1 antibody [GT11710] (GTx631836) diluted at 1:500.

Blue: Fluoroshield with DAPI (GTx30920).

Antigen Retrieval: Citrate buffer, pH 6.0, 15 min



### GTx134740 IHC-P Image

GPM6A antibody detects GPM6A protein at cell membrane by immunohistochemical analysis.

Sample: Paraffin-embedded mouse eye.

Green: GPM6A stained by GPM6A antibody (GTx134740) diluted at 1:1000.

Red: beta Tubulin 3/ Tuj1, a Cytoskeleton marker, stained by beta Tubulin 3/ Tuj1 antibody [GT11710] (GTx631836) diluted at 1:500.

Blue: Fluoroshield with DAPI (GTx30920).

Antigen Retrieval: Citrate buffer, pH 6.0, 15 min



For full product information, images and publications, please visit our [website](https://www.genetex.com).