

## HB9 / HLXB9 antibody

Cat. No. GTX134781

<b>Host</b>	Rabbit
<b>Clonality</b>	Polyclonal
<b>Isotype</b>	IgG
<b>Applications</b>	WB, IHC-Fr
<b>Reactivity</b>	Human, Mouse, Rat

Package  
100 µl, 25 µl

## Applications

## Application Note

\*Optimal dilutions/concentrations should be determined by the researcher.

Suggested dilution	Recommended dilution
WB	1:500-1:3000
IHC-Fr	Assay dependent

Not tested in other applications.

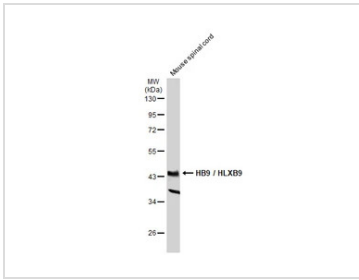
## Properties

<b>Form</b>	Liquid
<b>Buffer</b>	PBS, 20% Glycerol
<b>Preservative</b>	0.025% ProClin 300
<b>Storage</b>	Store as concentrated solution. Centrifuge briefly prior to opening vial. For short-term storage (1-2 weeks), store at 4°C. For long-term storage, aliquot and store at -20°C or below. Avoid multiple freeze-thaw cycles.
<b>Concentration</b>	1.23 mg/ml (Please refer to the vial label for the specific concentration.)
<b>Immunogen</b>	Carrier-protein conjugated synthetic peptide encompassing a sequence within the center region of mouse HB9 / HLXB9. The exact sequence is proprietary.
<b>Purification</b>	Purified by antigen-affinity chromatography.
<b>Conjugation</b>	Unconjugated
<b>Note</b>	For laboratory use only. Not for any clinical, therapeutic, or diagnostic use in humans or animals. Not for animal or human consumption.



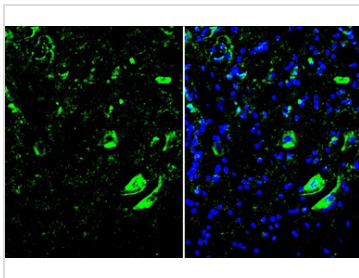
For full product information, images and publications, please visit our [website](#).

DATA IMAGES



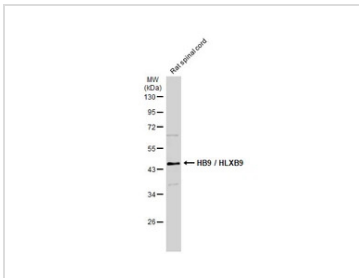
**GTX134781 WB Image**

Mouse tissue extract (50 µg) was separated by 10% SDS-PAGE, and the membrane was blotted with HB9 / HLXB9 antibody (GTX134781) diluted at 1:1000. The HRP-conjugated anti-rabbit IgG antibody (GTX213110-01) was used to detect the primary antibody.



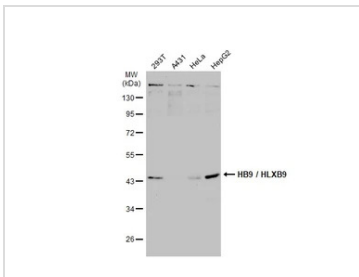
**GTX134781 IHC-Fr Image**

HB9 / HLXB9 antibody detects HB9 / HLXB9 protein by immunohistochemical analysis. Sample: Frozen-sectioned mouse spinal cord. Green: HB9 / HLXB9 stained by HB9 / HLXB9 antibody (GTX134781) diluted at 1:300. Blue: Hoechst 33342 staining.



**GTX134781 WB Image**

Rat tissue extract (50 µg) was separated by 10% SDS-PAGE, and the membrane was blotted with HB9 / HLXB9 antibody (GTX134781) diluted at 1:1000. The HRP-conjugated anti-rabbit IgG antibody (GTX213110-01) was used to detect the primary antibody.



**GTX134781 WB Image**

Various whole cell extracts (30 µg) were separated by 10% SDS-PAGE, and the membrane was blotted with HB9 / HLXB9 antibody (GTX134781) diluted at 1:500. The HRP-conjugated anti-rabbit IgG antibody (GTX213110-01) was used to detect the primary antibody.



For full product information, images and publications, please visit our [website](#).