

## BAFF antibody

Cat. No. GTX134790

Host	Rabbit
Clonality	Polyclonal
Isotype	IgG
Application	WB, ICC/IF, IHC-P
Reactivity	Human, Mouse

Package  
100 µl, 25 µl

## APPLICATION

## Application Note

\*Optimal dilutions/concentrations should be determined by the researcher.

Suggested dilution	Recommended dilution
WB	Assay dependent
ICC/IF	Assay dependent
IHC-P	Assay dependent

Not tested in other applications.

Calculated MW 34 kDa. ( [Note](#) )

## PROPERTIES

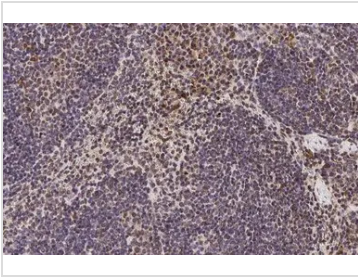
Form	Liquid
Buffer	PBS, 20% Glycerol
Preservative	0.025% ProClin 300
Storage	Store as concentrated solution. Centrifuge briefly prior to opening vial. For short-term storage (1-2 weeks), store at 4°C. For long-term storage, aliquot and store at -20°C or below. Avoid multiple freeze-thaw cycles.
Concentration	1.94 mg/ml (Please refer to the vial label for the specific concentration.)
Immunogen	Recombinant protein encompassing a sequence within the Extracellular domain of mouse BAFF. The exact sequence is proprietary.
Purification	Purified by antigen-affinity chromatography.
Conjugation	Unconjugated

**Note** For laboratory research use only. Not for any clinical, therapeutic, or diagnostic use in humans or animals. Not for animal or human consumption.

Purchasers shall not, and agree not to enable third parties to, analyze, copy, reverse engineer or otherwise attempt to determine the structure or sequence of the product.



For full product information, images and publications, please visit our [website](#).

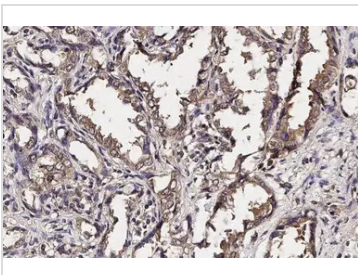
**DATA IMAGES**

**GTX134790 IHC-P Image**

BAFF antibody detects BAFF protein at cell membrane by immunohistochemical analysis.

Sample: Paraffin-embedded mouse spleen.

BAFF stained by BAFF antibody (GTX134790) diluted at 1:500.

Antigen Retrieval: Citrate buffer, pH 6.0, 15 min

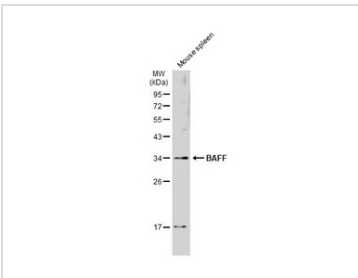

**GTX134790 IHC-P Image**

BAFF antibody detects BAFF protein at cell membrane and secreted by immunohistochemical analysis.

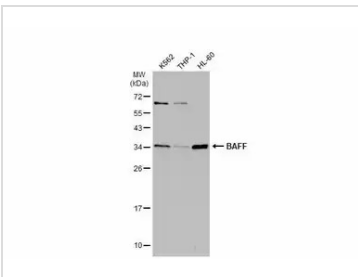
Sample: Paraffin-embedded human lung cancer.

BAFF stained by BAFF antibody (GTX134790) diluted at 1:500.

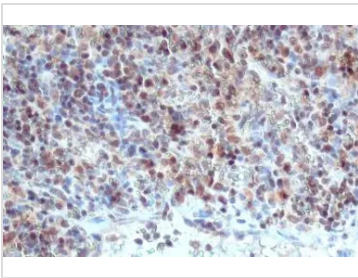
Antigen Retrieval: Citrate buffer, pH 6.0, 15 min


**GTX134790 WB Image**

Mouse tissue extract (50 µg) was separated by 12% SDS-PAGE, and the membrane was blotted with BAFF antibody (GTX134790) diluted at 1:1000. The HRP-conjugated anti-rabbit IgG antibody (GTX213110-01) was used to detect the primary antibody.


**GTX134790 WB Image**

Various whole cell extracts (30 µg) were separated by 12% SDS-PAGE, and the membrane was blotted with BAFF antibody (GTX134790) diluted at 1:1000. The HRP-conjugated anti-rabbit IgG antibody (GTX213110-01) was used to detect the primary antibody.


**GTX134790 IHC-P Image**

BAFF antibody detects BAFF protein at cytoplasm by immunohistochemical analysis.

Sample: Paraffin-embedded mouse spleen.

BAFF stained by BAFF antibody (GTX134790) diluted at 1:500.

Antigen Retrieval: Citrate buffer, pH 6.0, 15 min



For full product information, images and publications, please visit our [website](https://www.genetex.com).