

TOMM22 antibody

Cat. No. GTX134799

Host	Rabbit
Clonality	Polyclonal
Isotype	IgG
Application	WB, ICC/IF
Reactivity	Human

Package
100 µl, 25 µl

APPLICATION

Application Note

*Optimal dilutions/concentrations should be determined by the researcher.

Suggested dilution	Recommended dilution
WB	1:500-1:3000
ICC/IF	Assay dependent

Not tested in other applications.

Calculated MW 16 kDa. ([Note](#))

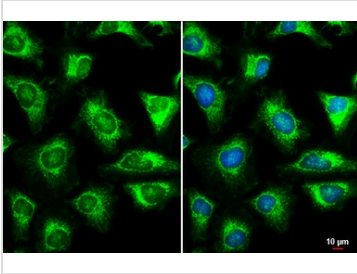
PROPERTIES

Form	Liquid
Buffer	PBS, 20% Glycerol
Preservative	0.025% ProClin 300
Storage	Store as concentrated solution. Centrifuge briefly prior to opening vial. For short-term storage (1-2 weeks), store at 4°C. For long-term storage, aliquot and store at -20°C or below. Avoid multiple freeze-thaw cycles.
Concentration	1.1 mg/ml (Please refer to the vial label for the specific concentration.)
Immunogen	Carrier-protein conjugated synthetic peptide encompassing a sequence within the N-terminus region of human TOMM22. The exact sequence is proprietary.
Purification	Purified by antigen-affinity chromatography.
Conjugation	Unconjugated
Note	For laboratory use only. Not for any clinical, therapeutic, or diagnostic use in humans or animals. Not for animal or human consumption.



For full product information, images and publications, please visit our [website](#).

DATA IMAGES



GTx134799 ICC/IF Image

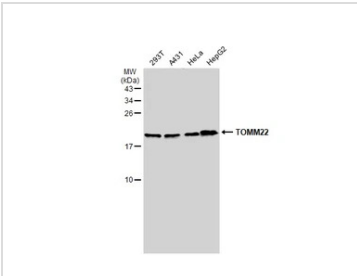
TOMM22 antibody detects TOMM22 protein at mitochondria by immunofluorescent analysis.

Sample: HeLa cells were fixed in ice-cold MeOH for 5 min.

Green: TOMM22 stained by TOMM22 antibody (GTx134799) diluted at 1:500.

Blue: Hoechst 33342 staining.

Scale bar= 10 μ m.



GTx134799 WB Image

Various whole cell extracts (30 μ g) were separated by 15% SDS-PAGE, and the membrane was blotted with TOMM22 antibody (GTx134799) diluted at 1:1000. The HRP-conjugated anti-rabbit IgG antibody (GTx213110-01) was used to detect the primary antibody.



For full product information, images and publications, please visit our [website](https://www.genetex.com).