

MERS-CoV Nucleoprotein antibody

Cat. No. GTX134868

Host	Rabbit
Clonality	Polyclonal
Isotype	IgG
Applications	WB, ELISA
Reactivity	Middle East respiratory syndrome coronavirus

References (4)

★★★★☆ Review (1)

Package

100 µl, 25 µl

Applications

Application Note

*Optimal dilutions/concentrations should be determined by the researcher.

Suggested dilution	Recommended dilution
WB	Assay dependent
ELISA	Assay dependent

Not tested in other applications.

Product Note

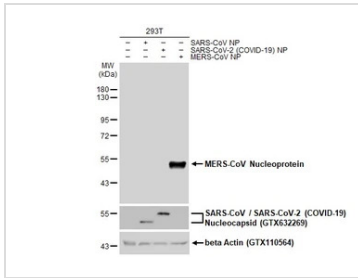
This antibody detects MERS-CoV Nucleoprotein, but does not cross-react with SARS-CoV or SARS-CoV-2 nucleocapsid proteins based on our internal testing.

Properties

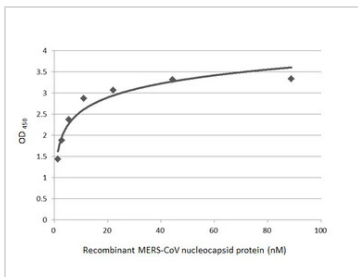
Form	Liquid
Buffer	PBS, 20% Glycerol
Preservative	0.025% ProClin 300
Storage	Store as concentrated solution. Centrifuge briefly prior to opening vial. For short-term storage (1-2 weeks), store at 4°C. For long-term storage, aliquot and store at -20°C or below. Avoid multiple freeze-thaw cycles.
Concentration	0.73 mg/ml (Please refer to the vial label for the specific concentration.)
Immunogen	Carrier-protein conjugated synthetic peptide encompassing a sequence within the center region of MERS-CoV Nucleoprotein (MERS-CoV (strain United Kingdom/H123990006/2012)). The exact sequence is proprietary.
Purification	Purified by antigen-affinity chromatography.
Conjugation	Unconjugated
Note	For laboratory use only. Not for any clinical, therapeutic, or diagnostic use in humans or animals. Not for animal or human consumption.



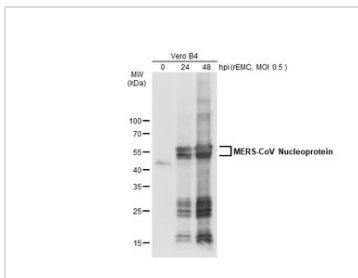
For full product information, images and publications, please visit our [website](#).

DATA IMAGES

GTX134868 WB Image

Non-transfected (–) and transfected (+) 293T whole cell extracts (30 µg) were separated by 10% SDS-PAGE, and the membrane was blotted with MERS-CoV Nucleoprotein antibody (GTX134868) diluted at 1:5000. The HRP-conjugated anti-rabbit IgG antibody (GTX213110-01) was used to detect the primary antibody.


GTX134868 ELISA Image

Indirect ELISA analysis performed by coating plate with recombinant MERS-CoV Nucleocapsid protein (GTX135653-pro) (88.75–1.39 nM). Coated protein was probed with MERS-CoV Nucleoprotein antibody (GTX134868) (1 µg/mL). Rabbit IgG antibody (HRP) (GTX213110-01) (1:10000) was used to detect bound primary antibody.


GTX134868 WB Image

Non-infected and infected Vero B4 whole cell extracts (20 µg) were separated by gradient gel, and the membrane was blotted with MERS-CoV Nucleoprotein antibody (GTX134868) diluted at 1:1000. The HRP-conjugated anti-rabbit IgG antibody (GTX213110-01) was used to detect the primary antibody.



For full product information, images and publications, please visit our [website](https://www.genetex.com).