

Hsp20 antibody

Cat. No. GTX13491

Host	Rabbit
Clonality	Polyclonal
Isotype	IgG
Applications	WB
Reactivity	Human, Mouse, Rat, Rabbit, Sheep, Bovine, Cat, Dog, Guinea pig, Pig

Package

50 µg

Applications

Application Note

WB: Use at a concentration of 0.05 µg/ml. Detects a band of approximately 20 kDa. Optimal dilutions/concentrations should be determined by the end user.

Calculated MW 18 kDa. ([Note](#))

Properties

Form	Liquid
Buffer	100mM Phosphate, 3% BSA
Preservative	No preservatives
Storage	Store as concentrated solution. Centrifuge briefly prior to opening vial. For short-term storage (1-2 weeks), store at 4°C. For long-term storage, aliquot and store at -20°C or below. Avoid multiple freeze-thaw cycles.
Concentration	1 mg/ml (Please refer to the vial label for the specific concentration.)
Immunogen	Rat skeletal muscle Hsp20.
Purification	Immunogen affinity purified
Conjugation	Unconjugated

Note

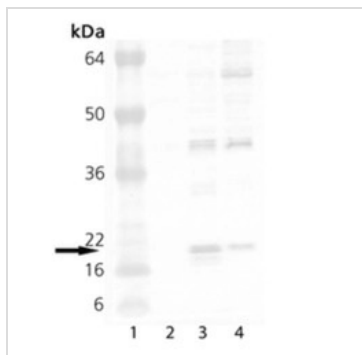
For laboratory research use only. Not for any clinical, therapeutic, or diagnostic use in humans or animals. Not for animal or human consumption.

Purchasers shall not, and agree not to enable third parties to, analyze, copy, reverse engineer or otherwise attempt to determine the structure or sequence of the product.



For full product information, images and publications, please visit our [website](#).

DATA IMAGES



GTX13491 WB Image

Western blot analysis of HSP20, pAb (GTX134916):

Lane 1: MW Marker

Lane 2: HeLa (heat shocked)

Lane 3: 3T3 (heat shocked)

Lane 4: PC-12 (heat shocked)



For full product information, images and publications, please visit our [website](https://www.genetex.com).