

Hsp90 antibody [AC88]

Cat. No. GTX13492

Host	Mouse
Clonality	Monoclonal
Isotype	IgG1
Applications	WB, ICC/IF, IHC-P, FCM, IP
Reactivity	Human, Mouse, Rat, Rabbit, Sheep, Bovine, Dog, Hamster, Guinea pig, Pig, Monkey, Carp, Rainbow trout, Fish

References (1)

Package

100 µg

Applications

Application Note

IHC-P: Use at an assay dependent dilution. When used in immunoprecipitation, this antibody does not appear to react well with Hsp90 that is bound to steroid receptors or to pp60v-src of Rouse sarcoma virus. WB: Use at a concentration of 1 µg/ml. Detects a band of approximately 90 kDa (predicted molecular weight: 84.7 kDa(alpha) and 83.2 kDa (beta)). Optimal dilutions/concentrations should be determined by the end user.

Product Note

GTX13492 recognises both Hsp90 alpha and beta. It reacts with the rodent glucocorticoid receptor and with proliferation potential proteins (P2PS) with apparent molecular masses of 30-40 kDa, which are associated with the 30-40S substructures of nuclear hnRNP complexes and share an epitope in common with Hsp90.

Properties

Form	Liquid
Buffer	PBS, 50% Glycerol, 0.1mM PMSF
Preservative	No preservative
Storage	Store as concentrated solution. Centrifuge briefly prior to opening vial. For short-term storage (1-2 weeks), store at 4°C. For long-term storage, aliquot and store at -20°C or below. Avoid multiple freeze-thaw cycles.
Concentration	1 mg/ml (Please refer to the vial label for the specific concentration.)
Immunogen	Achlya ambisexualis (water mold) Hsp90.
Purification	Protein G purified This antibody is affinity purified.
Conjugation	Unconjugated

Note

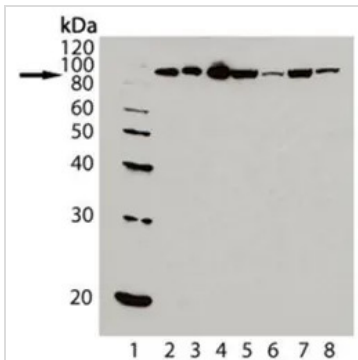
For laboratory research use only. Not for any clinical, therapeutic, or diagnostic use in humans or animals. Not for animal or human consumption.

Purchasers shall not, and agree not to enable third parties to, analyze, copy, reverse engineer or otherwise attempt to determine the structure or sequence of the product.



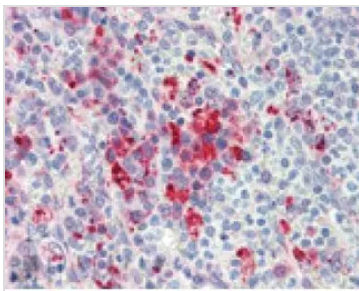
For full product information, images and publications, please visit our [website](#).

DATA IMAGES



GTX13492 WB Image

Western blot analysis of HSP90, mAb (AC88) : Lane 1: MW Marker; Lane 2: HSP90 (human), (native) ; Lane 3: HSP90beta, (human) (recombinant) ; Lane 4: HSP90alpha (human), (recombinant) ; Lane 5: HeLa (heat shocked); Lane 6: 3T3 (heat shocked) ; Lane 7: PC-12 (heat shocked) ; Lane 8: CHO-K1 (heat shocked).



GTX13492 IHC-P Image

Immunohistochemistry(paraffin sections) analysis of human spleen tissue stained with HSP90, mAb (AC88) at 10µg/ml.



For full product information, images and publications, please visit our [website](https://www.genetex.com).