

## Flotillin 1 antibody, C-term

Cat. No. GTX13493

<b>Host</b>	Goat
<b>Clonality</b>	Polyclonal
<b>Isotype</b>	IgG
<b>Applications</b>	WB, IHC-P
<b>Reactivity</b>	Human

Package  
100 µg

## Applications

## Application Note

\*Optimal dilutions/concentrations should be determined by the researcher.

Suggested dilution	Recommended dilution
WB	0.1-0.3µg/ml
IHC-P	3-5µg/ml

**Note : Human Kidney shows membrane staining in DCT.**

Not tested in other applications.

<b>Calculated MW</b>	47 kDa. ( <a href="#">Note</a> )
<b>Product Note</b>	This antibody is expected to recognize both reported isoforms (NP_005794.1; NP_001305804.1).

## Properties

<b>Form</b>	Liquid
<b>Buffer</b>	TBS, 0.5% BSA
<b>Preservative</b>	0.02% Sodium azide
<b>Storage</b>	Store as concentrated solution. Centrifuge briefly prior to opening vial. For short-term storage (1-2 weeks), store at 4°C. For long-term storage, aliquot and store at -20°C or below. Avoid multiple freeze-thaw cycles.
<b>Concentration</b>	0.50 mg/ml (Please refer to the vial label for the specific concentration.)
<b>Immunogen</b>	Peptide with sequence C-SISQVNHKPLRTA, from the C Terminus of the protein sequence according to NP_005794.1; NP_001305804.1.
<b>Purification</b>	Purified by ammonium sulphate precipitation followed by antigen affinity chromatography
<b>Conjugation</b>	Unconjugated



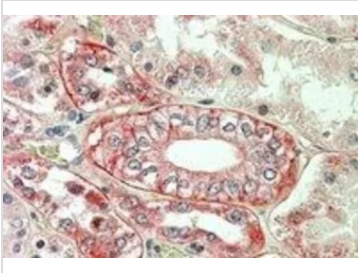
For full product information, images and publications, please visit our [website](#).

For laboratory research use only. Not for any clinical, therapeutic, or diagnostic use in humans or animals. Not for animal or human consumption.

**Note**

Purchasers shall not, and agree not to enable third parties to, analyze, copy, reverse engineer or otherwise attempt to determine the structure or sequence of the product.

## DATA IMAGES

**GTX13493 IHC-P Image**

IHC-P analysis of human kidney using GTX13493 Flotillin 1 antibody, C-term.

Antigen retrieval : citrate buffer pH 6

Dilution : 3.8µg/ml



For full product information, images and publications, please visit our [website](#).