

Hsp90 antibody [16F1]

Cat. No. GTX13494

Host	Rat
Clonality	Monoclonal
Isotype	IgG2a
Applications	WB, ICC/IF, IHC-P, IP, EIA, IHC
Reactivity	Human, Mouse, Rat, Sheep, Drosophila, Bovine, Dog, Hamster, Guinea pig, Pig, Monkey, Carp, Rainbow trout

References (2)

Package

100 µg

Applications

Application Note

IHC-P: Use at an assay dependent dilution. IP: Use at an assay dependent dilution. Detects both free and complexed Hsp90 and also picks up both hsp90 alpha and beta equally well (detects 100ng of each). WB: Use at a concentration of 2 µg/ml. Detects a band of approximately 90 kDa (predicted molecular weight: 83.2 kDa (beta) & 84.5 kDa (alpha)). Optimal dilutions/concentrations should be determined by the end user.

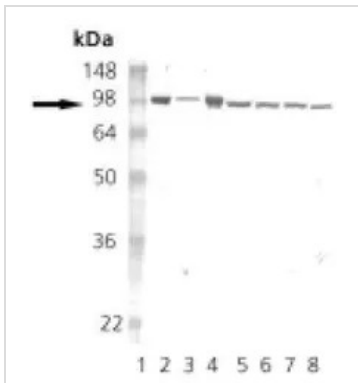
Product Note Detects both the alpha and beta isoforms of Hsp90

Properties

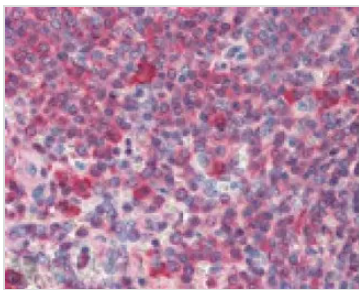
Form	Liquid
Buffer	PBS, 50% Glycerol, 0.1mM PMSF
Preservative	No preservatives
Storage	Store as concentrated solution. Centrifuge briefly prior to opening vial. For short-term storage (1-2 weeks), store at 4°C. For long-term storage, aliquot and store at -20°C or below. Avoid multiple freeze-thaw cycles.
Concentration	1 mg/ml (Please refer to the vial label for the specific concentration.)
Immunogen	Human Hsp90 purified from therapeutic orchiectomy specimens.
Purification	Protein G affinity purified
Conjugation	Unconjugated
Note	For laboratory research use only. Not for any clinical, therapeutic, or diagnostic use in humans or animals. Not for animal or human consumption. Purchasers shall not, and agree not to enable third parties to, analyze, copy, reverse engineer or otherwise attempt to determine the structure or sequence of the product.



For full product information, images and publications, please visit our [website](#).

DATA IMAGES

GTx13494 WB Image

Western blot analysis of HSP90: Lane 1: MW marker, Lane 2: HSP90 native protein, Lane 3: HSP90b recombinant protein, Lane 4: HSP90alpha recombinant protein, Lane 5: HeLa , Lane 6: L-929 , Lane 7: Rat-2 , Lane 8:RK-13.


GTx13494 IHC-P Image

Immunohistochemistry (paraffin sections) analysis of human spleen tissue stained with HSP90, mAb (16F1) at 10µg/ml.



For full product information, images and publications, please visit our [website](https://www.genetex.com).