

alpha B Crystallin antibody

Cat. No. GTX13497

Host	Rabbit
Clonality	Polyclonal
Isotype	IgG
Applications	WB, ICC/IF, IP, IHC
Reactivity	Human, Mouse, Rat, Rabbit, Bovine, Hamster, Pig

Package
100 µl

Applications

Application Note

Recommended Starting Dilutions:

ICC: Use at a dilution of 1/200.

IP: Use at an assay dependent dilution.

WB: Use at a dilution of 1/1000 - 1/2000. 1/2000 dilution is sufficient to detect 50ng of alpha B Crystallin. Detects a band of approximately 22 kDa (predicted MW 20 kDa).

Optimal dilutions/concentrations should be determined by the end user.

Calculated MW 20 kDa. ([Note](#))**Product Note** This antibody does not cross-react with beta Crystallin nor alpha A Crystallin.

Properties

Form	Liquid
Buffer	PBS, 50% Glycerol
Preservative	0.09% Sodium azide
Storage	Store as concentrated solution. Centrifuge briefly prior to opening vial. For short-term storage (1-2 weeks), store at 4°C. For long-term storage, aliquot and store at -20°C or below. Avoid multiple freeze-thaw cycles.
Concentration	1 mg/ml (Please refer to the vial label for the specific concentration.)
Immunogen	Synthetic peptide: REEKPAVTAAPKK conjugated to KLH, corresponding to amino acids 163-175 of Human alpha B Crystallin.
Purification	Protein A affinity purified.
Conjugation	Unconjugated

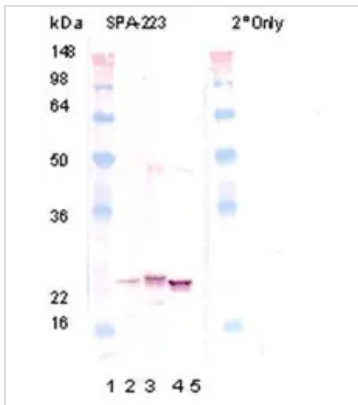
Note

For laboratory research use only. Not for any clinical, therapeutic, or diagnostic use in humans or animals. Not for animal or human consumption.

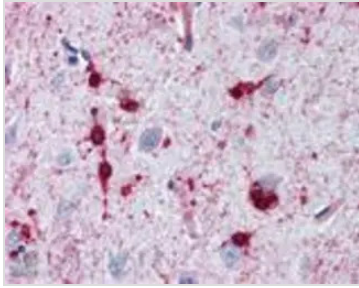
Purchasers shall not, and agree not to enable third parties to, analyze, copy, reverse engineer or otherwise attempt to determine the structure or sequence of the product.

For full product information, images and publications, please visit our [website](#).

DATA IMAGES

**GTX13497 WB Image**

Western blot analysis of GTX13497: Lane 1: MW marker, Lane 2: Prod. No. bovine alpha Crystallin protein, Lane 3: bovine alpha A crystallin protein, Lane 4: bovine alpha B crystallin protein, Lane 5: bovine beta crystallin protein.

**GTX13497 IHC Image**

Immunohistochemical analysis of human brain cortex tissue stained with α B-Crystallin pAb at 10 μ g/mL.



For full product information, images and publications, please visit our [website](#).