

SOD1 antibody

Cat. No. GTX13498

Host	Rabbit
Clonality	Polyclonal
Isotype	IgG
Application	WB, ICC/IF, IP, ELISA, IHC
Reactivity	Human, Mouse, Rat, Rabbit, Sheep, Bovine, Dog, Hamster, Pig, Monkey, Xenopus laevis

Package

50 µg

APPLICATION

Application Note

ELISA: Use at an assay dependent dilution. IHC: Use at a concentration of 1 µg/ml. IP: Use at a concentration of 10 µg/ml. WB: Use at a concentration of 0.2 µg/ml. Detects a band of approximately 19 and 23 kDa (predicted molecular weight: 18 kDa). Optimal dilutions/concentrations should be determined by the end user.

Calculated MW 16 kDa. ([Note](#))

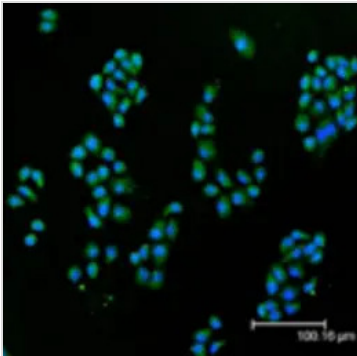
PROPERTIES

Form	Liquid
Buffer	100mM Sodium Phosphate, 50% Glycerol
Preservative	0.1% Sodium azide
Storage	Store as concentrated solution. Centrifuge briefly prior to opening vial. For short-term storage (1-2 weeks), store at 4°C. For long-term storage, aliquot and store at -20°C or below. Avoid multiple freeze-thaw cycles.
Concentration	1 mg/ml (Please refer to the vial label for the specific concentration.)
Immunogen	Full length protein (Human).
Purification	Immunogen affinity purified This antibody was purified on an antigen coupled sepharose column.
Conjugation	Unconjugated
Note	For laboratory research use only. Not for any clinical, therapeutic, or diagnostic use in humans or animals. Not for animal or human consumption. Purchasers shall not, and agree not to enable third parties to, analyze, copy, reverse engineer or otherwise attempt to determine the structure or sequence of the product.



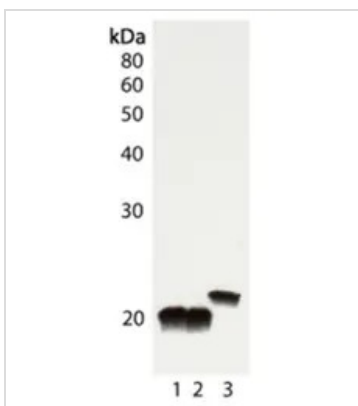
For full product information, images and publications, please visit our [website](#).

DATA IMAGES



GTx13498 ICC/IF Image

Immunofluorescent analysis (confocal) staining of HeLa cells using GTx13498 (green); nuclei are stained in blue pseudo-color using DRAQ5.



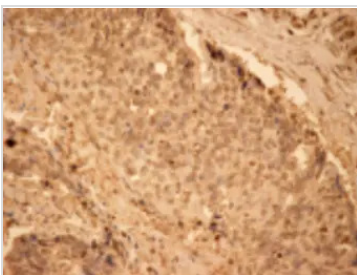
GTx13498 WB Image

Western blot analysis of GTx13498.

Lane 1: Rat liver tissue lysate

Lane 2: Mouse liver tissue lysate

Lane 3: HeLa cell lysate.



GTx13498 IHC Image

Immunohistochemistry analysis of human heart tissue stained with GTx13498 at 10 µg/mL.



For full product information, images and publications, please visit our [website](https://www.genetex.com).