

## SOD1 antibody

Cat. No. GTX13499

Host	Rabbit
Clonality	Polyclonal
Isotype	IgG
Applications	WB, ELISA, IHC
Reactivity	Human, Mouse, Rat, Rabbit, Sheep, Bovine, Dog, Hamster, Pig, Monkey, Xenopus laevis

References ( 1 )

Package

50 µg

## Applications

## Application Note

ELISA: Use at an assay dependent dilution. IHC: Use at a concentration of 1 µg/ml. WB: Use at a concentration of 1 µg/ml. Detects a band of approximately 19 and 23 kDa (predicted molecular weight: 18 kDa). Optimal dilutions/concentrations should be determined by the end user.

Calculated MW 16 kDa. ( [Note](#) )

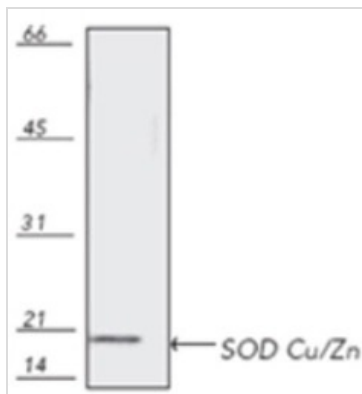
## Properties

Form	Liquid
Buffer	100mM Sodium Phosphate, 50% Glycerol
Preservative	0.1% Sodium azide
Storage	Store as concentrated solution. Centrifuge briefly prior to opening vial. For short-term storage (1-2 weeks), store at 4°C. For long-term storage, aliquot and store at -20°C or below. Avoid multiple freeze-thaw cycles.
Concentration	1 mg/ml (Please refer to the vial label for the specific concentration.)
Immunogen	Full length protein (Rat).
Purification	Immunogen affinity purified This antibody was purified on an antigen coupled sepharose column.
Conjugation	Unconjugated
Note	For laboratory research use only. Not for any clinical, therapeutic, or diagnostic use in humans or animals. Not for animal or human consumption.  Purchasers shall not, and agree not to enable third parties to, analyze, copy, reverse engineer or otherwise attempt to determine the structure or sequence of the product.



For full product information, images and publications, please visit our [website](#).

## DATA IMAGES



### GTx13499 WB Image

Western blot analysis: rat brain tissue extract, probed with Cu/Zn SOD pAb.



For full product information, images and publications, please visit our [website](#).