

E-Cadherin antibody - VetSignal

Cat. No. GTX134997

Host	Rabbit
Clonality	Polyclonal
Isotype	IgG
Applications	WB, ICC/IF, IHC-P
Reactivity	Dog

References (2)

Package

100 µl

Applications

Application Note

*Optimal dilutions/concentrations should be determined by the researcher.

Suggested dilution	Recommended dilution
WB	1:1000-1:10000
ICC/IF	1:100-1:1000
IHC-P	1:100-1:1000

Not tested in other applications.

Properties

Form	Liquid
Buffer	1XPBS (pH7), 1% BSA, 20% Glycerol
Preservative	0.025% ProClin 300
Storage	Store as concentrated solution. Centrifuge briefly prior to opening vial. For short-term storage (1-2 weeks), store at 4°C. For long-term storage, aliquot and store at -20°C or below. Avoid multiple freeze-thaw cycles.
Concentration	0.49 mg/ml (Please refer to the vial label for the specific concentration.)
Immunogen	Recombinant protein corresponding to dog E-Cadherin.
Purification	Purified by antigen-affinity chromatography.
Conjugation	Unconjugated

Note

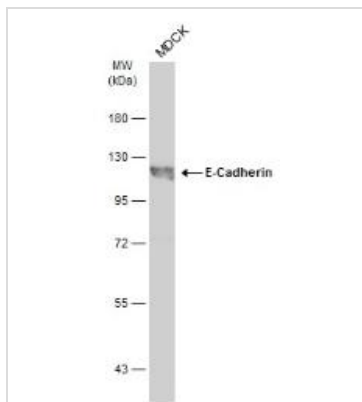
For laboratory research use only. Not for any clinical, therapeutic, or diagnostic use in humans or animals. Not for animal or human consumption.

Purchasers shall not, and agree not to enable third parties to, analyze, copy, reverse engineer or otherwise attempt to determine the structure or sequence of the product.



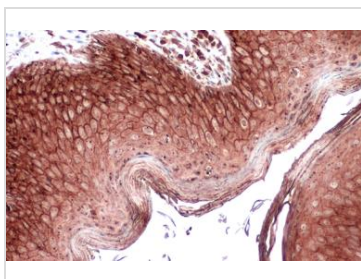
For full product information, images and publications, please visit our [website](#).

DATA IMAGES



GTx134997 WB Image

Whole cell extract (30 µg) was separated by 7.5% SDS-PAGE, and the membrane was blotted with E-Cadherin antibody (GTx134997) diluted at 1:7000. The HRP-conjugated anti-rabbit IgG antibody (GTx213110-01) was used to detect the primary antibody.



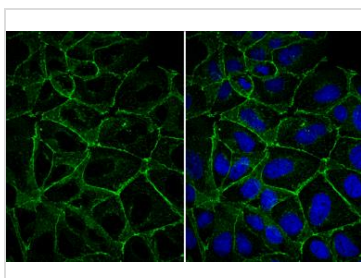
GTx134997 IHC-P Image

E-Cadherin antibody detects E-Cadherin protein at cell membrane and cytoplasm by immunohistochemical analysis.

Sample: Paraffin-embedded dog skin.

E-Cadherin stained by E-Cadherin antibody (GTx134997) diluted at 1:500.

Antigen Retrieval: Citrate buffer, pH 6.0, 15 min

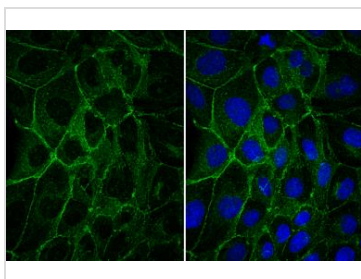


GTx134997 ICC/IF Image

E-Cadherin antibody detects E-Cadherin protein at cell membrane by immunofluorescent analysis.

Sample: MDCK cells were fixed in 4% paraformaldehyde at RT for 15 min.

Green: E-Cadherin stained by E-Cadherin antibody (GTx134997) diluted at 1:500.



GTx134997 ICC/IF Image

E-Cadherin antibody detects E-Cadherin protein at cell membrane by immunofluorescent analysis.

Sample: MDCK cells were fixed in 4% paraformaldehyde at RT for 15 min.

Green: E-Cadherin stained by E-Cadherin antibody (GTx134997) diluted at 1:500.



For full product information, images and publications, please visit our [website](https://www.genetex.com).