

Calnexin antibody

Cat. No. GTX13505

Host	Rabbit
Clonality	Polyclonal
Isotype	IgG
Applications	WB, ICC/IF, FCM, IP, IHC
Reactivity	Human, Mouse, Rat, Rabbit, Sheep, Bovine, Hamster, Guinea pig, Pig, Monkey, Xenopus laevis, Quail

References (1)

Package

100 µl

Applications

Application Note

ICC: Use at a dilution of 1/200. IP: Use at a dilution of 1/100. WB: Use at a dilution of 1/5000. (This dilution was sufficient for detection of Calnexin in 20µg of HeLa heat shocked cell lysate). Detects a band of approximately 90 kDa. (predicted molecular weight: 71 kDa). Optimal dilutions/concentrations should be determined by the end user.

Calculated MW 68 kDa. ([Note](#))

Properties

Form	Liquid
Buffer	Serum
Preservative	No preservatives
Storage	Store as concentrated solution. Centrifuge briefly prior to opening vial. For short-term storage (1-2 weeks), store at 4°C. For long-term storage, aliquot and store at -20°C or below. Avoid multiple freeze-thaw cycles.
Immunogen	Synthetic peptide: TAPPSSPKVTYKAPVPTGE conjugated to KLH, corresponding to amino acids 50-68 of Human Calnexin
Purification	Whole antiserum
Conjugation	Unconjugated

Note

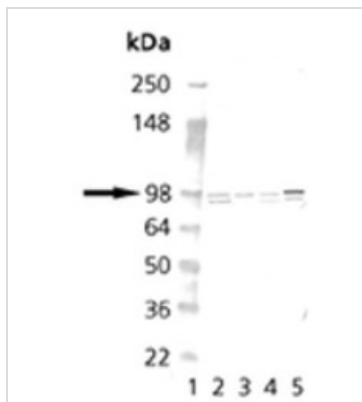
For laboratory research use only. Not for any clinical, therapeutic, or diagnostic use in humans or animals. Not for animal or human consumption.

Purchasers shall not, and agree not to enable third parties to, analyze, copy, reverse engineer or otherwise attempt to determine the structure or sequence of the product.



For full product information, images and publications, please visit our [website](#).

DATA IMAGES



GTX13505 WB Image

Western blot analysis:

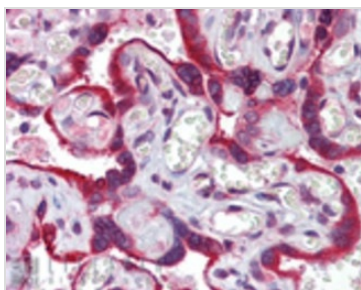
Lane 1: MWM

Lane 2: Vero

Lane 3: 3T3

Lane 4: PC-12

Lane 5: HeLa.



GTX13505 IHC Image

Immunohistochemistry analysis of human placenta tissue stained with Calnexin, pAb at 5 µg/ml.



For full product information, images and publications, please visit our [website](#).