

## ERp57 antibody [MaP.Erp57]

**Cat. No. GTX13506**

<b>Host</b>	Mouse
<b>Clonality</b>	Monoclonal
<b>Isotype</b>	IgG1
<b>Applications</b>	WB, IP
<b>Reactivity</b>	Human, Mouse, Dog, Hamster, Pig, Monkey

**Package**  
50 µg

## Applications

**Application Note**

IP: Use at a concentration of 10 µg/ml. WB: Use at a concentration of 0.5 µg/ml. This concentration is sufficient for the detection of ERp57 in 20µg of HeLa heat shocked cell lysate by colorimetric analysis. Predicted molecular weight: 61 kDa. Optimal dilutions/concentrations should be determined by the end user.

**Calculated MW** 57 kDa. ([Note](#))

## Properties

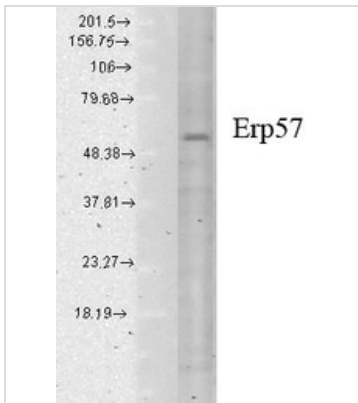
<b>Form</b>	Liquid
<b>Buffer</b>	5mM Sodium Phosphate, 25mM NaCl, 0.05mM PMSF, 50% Glycerol
<b>Preservative</b>	0.09% Sodium azide
<b>Storage</b>	Store as concentrated solution. Centrifuge briefly prior to opening vial. For short-term storage (1-2 weeks), store at 4°C. For long-term storage, aliquot and store at -20°C or below. Avoid multiple freeze-thaw cycles.
<b>Concentration</b>	1 mg/ml (Please refer to the vial label for the specific concentration.)
<b>Immunogen</b>	Recombinant full length protein (Human).
<b>Purification</b>	Protein G purified This antibody is affinity purified.
<b>Conjugation</b>	Unconjugated

**Note** For laboratory research use only. Not for any clinical, therapeutic, or diagnostic use in humans or animals. Not for animal or human consumption.

Purchasers shall not, and agree not to enable third parties to, analyze, copy, reverse engineer or otherwise attempt to determine the structure or sequence of the product.

For full product information, images and publications, please visit our [website](#).

## DATA IMAGES

**GTX13506 WB Image**

Western blot analysis of ERP57 in human cell lysates using a 1:1000 dilution of GTX13506



For full product information, images and publications, please visit our [website](#).