

## Membrin antibody [4HAD6]

Cat. No. GTX13511

<b>Host</b>	Mouse
<b>Clonality</b>	Monoclonal
<b>Isotype</b>	IgG1
<b>Applications</b>	WB, ICC/IF, IP
<b>Reactivity</b>	Human, Mouse, Rat, Rabbit, Dog, Hamster, Pig

Package  
50 µg

## Applications

## Application Note

ICC: Use at a dilution of 1/500. IP: Use at a concentration of 2 - 4 µg/ml. WB: Use at a concentration of 2 µg/ml. This concentration detects membrin in 20µg of HeLa heat shocked cell lysate by ECL analysis. Predicted molecular weight: 27 kDa. Optimal dilutions/concentrations should be determined by the end user.

Calculated MW 25 kDa. ([Note](#))

## Properties

<b>Form</b>	Liquid
<b>Buffer</b>	PBS, 50% Glycerol, 0.1mM PMSF
<b>Preservative</b>	No preservatives
<b>Storage</b>	Store as concentrated solution. Centrifuge briefly prior to opening vial. For short-term storage (1-2 weeks), store at 4°C. For long-term storage, aliquot and store at -20°C or below. Avoid multiple freeze-thaw cycles.
<b>Concentration</b>	1 mg/ml (Please refer to the vial label for the specific concentration.)
<b>Immunogen</b>	Recombinant rat membrin with a His6 tag
<b>Purification</b>	Protein G purified
<b>Conjugation</b>	Unconjugated

## Note

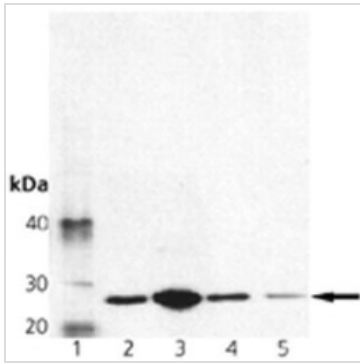
For laboratory research use only. Not for any clinical, therapeutic, or diagnostic use in humans or animals. Not for animal or human consumption.

Purchasers shall not, and agree not to enable third parties to, analyze, copy, reverse engineer or otherwise attempt to determine the structure or sequence of the product.



For full product information, images and publications, please visit our [website](#).

## DATA IMAGES

**GTX13511 WB Image**

Western blot analysis of GTX13511:

Lane 1: MW marker

Lane 2: HeLa

Lane 3: PC-12

Lane 4: RK13

Lane 5: Vero.



For full product information, images and publications, please visit our [website](#).