

## TAP1 antibody

Cat. No. GTX13516

Host	Rabbit
Clonality	Polyclonal
Isotype	IgG
Applications	WB, ICC/IF, IP, IHC
Reactivity	Human, Rat

References ( 1 )

Package

50 µl

## Applications

## Application Note

ICC: Use at an assay dependent dilution. IP: Use at a dilution of 1/100. WB: Use at a dilution of 1/4000. Detects a band of approximately 70 kDa. Optimal dilutions/concentrations should be determined by the end user.

Calculated MW 87 kDa. ( [Note](#) )

## Properties

Form	Liquid
Buffer	Serum
Preservative	No preservative
Storage	Store as concentrated solution. Centrifuge briefly prior to opening vial. For short-term storage (1-2 weeks), store at 4°C. For long-term storage, aliquot and store at -20°C or below. Avoid multiple freeze-thaw cycles.
Immunogen	Synthetic peptide: AKLVQRQMLGLQPA, corresponding to amino acids 735-748 of Human TAP1.
Purification	Whole antiserum
Conjugation	Unconjugated

## Note

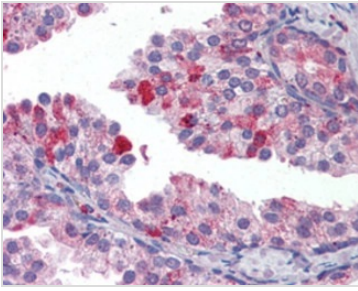
For laboratory research use only. Not for any clinical, therapeutic, or diagnostic use in humans or animals. Not for animal or human consumption.

Purchasers shall not, and agree not to enable third parties to, analyze, copy, reverse engineer or otherwise attempt to determine the structure or sequence of the product.



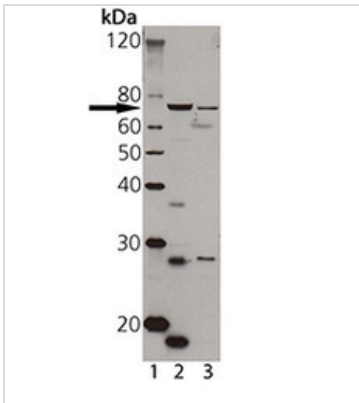
For full product information, images and publications, please visit our [website](#).

## DATA IMAGES



### GTX13516 IHC Image

IHC analysis: Human prostate tissue stained with TAP1, pAb at 1:100.



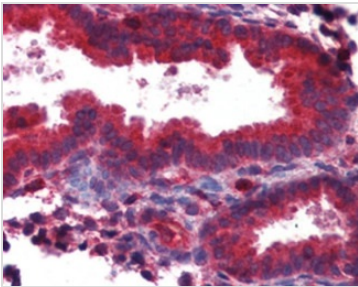
### GTX13516 WB Image

Western blot analysis of TAP1, pAb (GTX13516):

Lane 1: MW marker

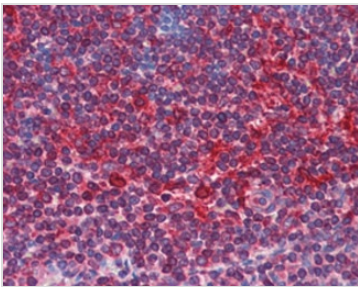
Lane 2: A431 cell lysate

Lane 3: HeLa cell lysate



### GTX13516 IHC Image

IHC analysis: Human uterus tissue stained with TAP1, pAb at 1:100



### GTX13516 IHC Image

IHC analysis: Human tonsil tissue stained with TAP1, pAb at 1:100.



For full product information, images and publications, please visit our [website](https://www.genetex.com).