

## ASFV p54 antibody

Cat. No. GTX135175

Host	Rabbit
Clonality	Polyclonal
Isotype	IgG
Applications	WB, ICC/IF, ELISA, Sandwich ELISA
Reactivity	African swine fever virus

Package  
100 µl, 25 µl

## Applications

## Application Note

\*Optimal dilutions/concentrations should be determined by the researcher.

Suggested dilution	Recommended dilution
WB	1:5000
ICC/IF	Assay dependent
ELISA	Assay dependent
Sandwich ELISA	Assay dependent

**Note :** Capture: GTX635690 / GTX635691, Detection: GTX135175

Please notice that GTX135175 needs to be conjugated to HRP to function as the detection antibody when paired with GTX635690 / GTX635691. Please contact us for custom HRP-conjugated antibody.

Not tested in other applications.

## Properties

Form	Liquid
Buffer	PBS, 20% Glycerol
Preservative	0.025% ProClin 300
Storage	Store as concentrated solution. Centrifuge briefly prior to opening vial. For short-term storage (1-2 weeks), store at 4°C. For long-term storage, we recommend adding 50% glycerol, then aliquot and store at -20°C or below. Avoid multiple freeze-thaw cycles.
Concentration	1 mg/ml (Please refer to the vial label for the specific concentration.)
Immunogen	Recombinant protein encompassing a sequence within the center region of ASFV p54 (ASFV (strain: BA71V)). The exact sequence is proprietary.
Purification	Purified by antigen-affinity chromatography.
Conjugation	Unconjugated



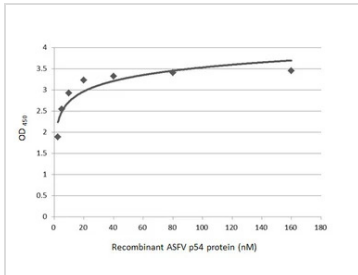
For full product information, images and publications, please visit our [website](#).

Date 2026 / 02 / 08 Page 1 of 2

For laboratory research use only. Not for any clinical, therapeutic, or diagnostic use in humans or animals. Not for animal or human consumption.

**Note**

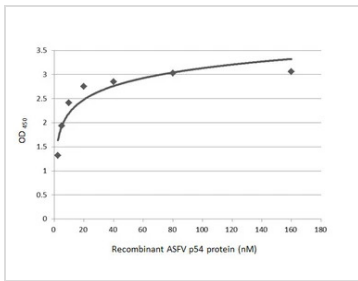
Purchasers shall not, and agree not to enable third parties to, analyze, copy, reverse engineer or otherwise attempt to determine the structure or sequence of the product.

**DATA IMAGES**

**GTx135175 ELISA Image**

Sandwich ELISA detection of recombinant ASFV p54 using antibodies as below.

Capture: ASFV p54 antibody [GT853] (GTx635690) (5 µg/mL)

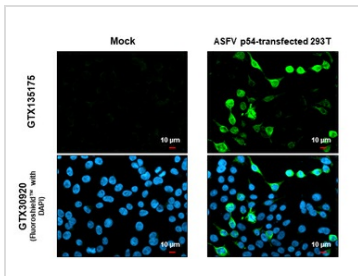
Detection: ASFV p54 antibody (GTx135175) (1 µg/mL)


**GTx135175 ELISA Image**

Sandwich ELISA detection of recombinant ASFV p54 using antibodies as below.

Capture: ASFV p54 antibody [GT1075] (GTx635691) (5 µg/mL)

Detection: ASFV p54 antibody (GTx135175) (1 µg/mL)


**GTx135175 ICC/IF Image**

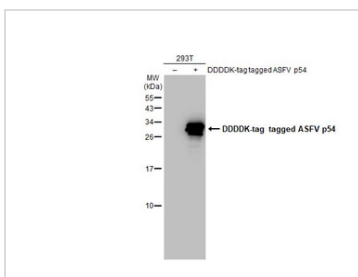
ASFV p54 antibody detects ASFV p54 protein by immunofluorescent analysis.

Sample: Mock and transfected 293T cells were fixed in 4% paraformaldehyde at RT for 15 min.

Green: ASFV p54 stained by ASFV p54 antibody (GTx135175) diluted at 1:500.

Blue: Fluoroshield with DAPI (GTx30920).

Scale bar = 10µm.


**GTx135175 WB Image**

Non-transfected (–) and transfected (+) 293T whole cell extracts (30 µg) were separated by 15% SDS-PAGE, and the membrane was blotted with ASFV p54 antibody (GTx135175) diluted at 1:5000. The HRP-conjugated anti-rabbit IgG antibody (GTx213110-01) was used to detect the primary antibody.



For full product information, images and publications, please visit our [website](https://www.genetex.com).