

Tapasin antibody

Cat. No. GTX13518

Host	Rabbit
Clonality	Polyclonal
Isotype	IgG
Applications	WB, IP
Reactivity	Human, Mouse, Rat, Bovine

Package
50 µg

Applications

Application Note

IP: Use at a dilution of 1/100. WB: Use at a dilution of 1/1000. Detects a band of approximately 48 kDa. Optimal dilutions/concentrations should be determined by the end user.

Calculated MW 48 kDa. ([Note](#))

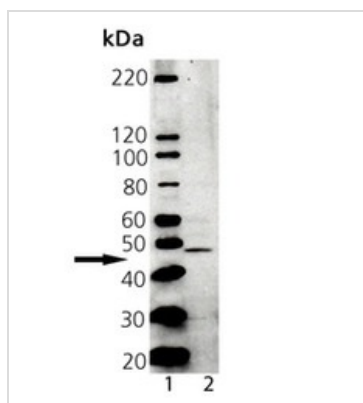
Properties

Form	Liquid
Buffer	PBS, 50% Glycerol
Preservative	0.09% Sodium azide
Storage	Store as concentrated solution. Centrifuge briefly prior to opening vial. For short-term storage (1-2 weeks), store at 4°C. For long-term storage, aliquot and store at -20°C or below. Avoid multiple freeze-thaw cycles.
Concentration	Batch dependent (Please refer to the vial label for the specific concentration.)
Immunogen	Synthetic peptide: LGWAAVYLSTCKDSKKAE , corresponding to amino acids 430-448 of Human Tapasin.
Purification	Protein A affinity purified
Conjugation	Unconjugated
Note	For laboratory research use only. Not for any clinical, therapeutic, or diagnostic use in humans or animals. Not for animal or human consumption. Purchasers shall not, and agree not to enable third parties to, analyze, copy, reverse engineer or otherwise attempt to determine the structure or sequence of the product.



For full product information, images and publications, please visit our [website](#).

DATA IMAGES



GTX13518 WB Image

Western blot analysis of Tapasin, PAb:

Lane 1: MW marker

Lane 2: A431 Lysate



For full product information, images and publications, please visit our [website](https://www.genetex.com).