

## GOSR1 antibody [HFD9-5]

Cat. No. GTX13522

Host	Mouse
Clonality	Monoclonal
Isotype	IgG1
Applications	WB, ICC/IF, IP, IM
Reactivity	Mouse, Rat, Rabbit, Sheep, Bovine, Dog, Hamster, Pig

Package  
50 µg

## Applications

## Application Note

ICC: Use at a concentration of 2 µg/ml. IM: Use at an assay dependent dilution. IP: Use at a concentration of 1 µg/ml. WB: Use at a concentration of 2 µg/ml. Detects a band of approximately 28 kDa. Optimal dilutions/concentrations should be determined by the end user.

Calculated MW 29 kDa. ( [Note](#) )

## Properties

Form	Liquid
Buffer	PBS, 0.1mM PMSF, 50% Glycerol
Preservative	0.09% Sodium azide
Storage	Store as concentrated solution. Centrifuge briefly prior to opening vial. For short-term storage (1-2 weeks), store at 4°C. For long-term storage, aliquot and store at -20°C or below. Avoid multiple freeze-thaw cycles.
Concentration	1 mg/ml (Please refer to the vial label for the specific concentration.)
Immunogen	Rat liver Golgi-enriched membranes.
Purification	Protein G purified
Conjugation	Unconjugated

## Note

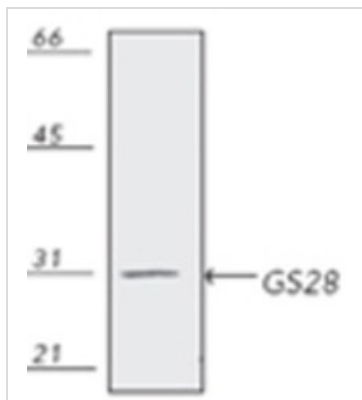
For laboratory research use only. Not for any clinical, therapeutic, or diagnostic use in humans or animals. Not for animal or human consumption.

Purchasers shall not, and agree not to enable third parties to, analyze, copy, reverse engineer or otherwise attempt to determine the structure or sequence of the product.



For full product information, images and publications, please visit our [website](#).

## DATA IMAGES



### GTX13522 WB Image

Western blot analysis of pig kidney ESK-4 cell lysate, probed with GS28 mAb (HFD9).



For full product information, images and publications, please visit our [website](https://www.genetex.com).