

## LAMP1 antibody [Ly1C6]

**Cat. No. GTX13523**

<b>Host</b>	Mouse
<b>Clonality</b>	Monoclonal
<b>Isotype</b>	IgG1
<b>Applications</b>	WB, ICC/IF
<b>Reactivity</b>	Human, Mouse, Rat, Hamster

References ( 7 )  
 Package  
 50 µg

## Applications

**Application Note**

\*Optimal dilutions/concentrations should be determined by the researcher.

Suggested dilution	Recommended dilution
WB	1µg/ml
ICC/IF	5-10µg/ml

Not tested in other applications.

**Calculated MW** 44 kDa. ( [Note](#) )

## Properties

<b>Form</b>	Liquid
<b>Buffer</b>	PBS, 50% Glycerol
<b>Preservative</b>	0.09% Sodium azide
<b>Storage</b>	Store as concentrated solution. Centrifuge briefly prior to opening vial. For short-term storage (1-2 weeks), store at 4°C. For long-term storage, aliquot and store at -20°C or below. Avoid multiple freeze-thaw cycles.
<b>Concentration</b>	Batch dependent (Please refer to the vial label for the specific concentration.)
<b>Immunogen</b>	Rat liver lysosome membranes.
<b>Purification</b>	Protein G purified
<b>Conjugation</b>	Unconjugated

**Note**

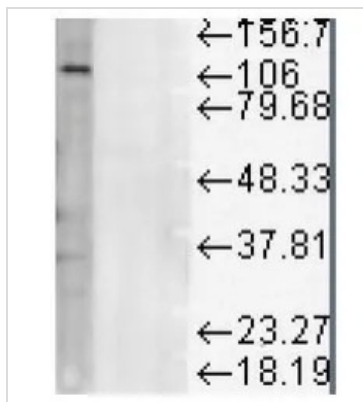
For laboratory research use only. Not for any clinical, therapeutic, or diagnostic use in humans or animals. Not for animal or human consumption.

Purchasers shall not, and agree not to enable third parties to, analyze, copy, reverse engineer or otherwise attempt to determine the structure or sequence of the product.



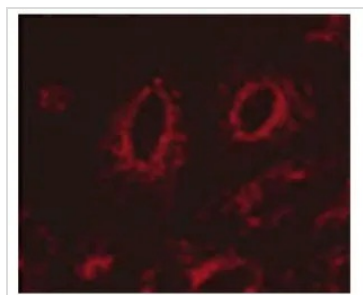
For full product information, images and publications, please visit our [website](#).

DATA IMAGES



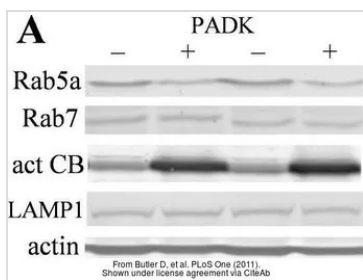
**GTX13523 WB Image**

WB analysis of rat liver microsomal lysates using GTX13523 LAMP1 antibody [Ly1C6].



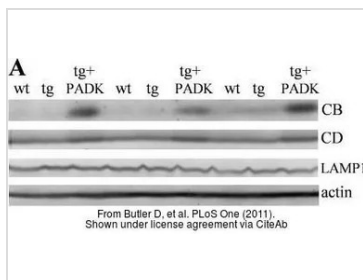
**GTX13523 ICC/IF Image**

ICC/IF analysis of LAMP 1 transfected HeLa cells. using GTX13523 LAMP1 antibody [Ly1C6].



**GTX13523 WB Image**

The data was published in the journal PLoS One in 2011. [PMID: 21695208](https://pubmed.ncbi.nlm.nih.gov/21695208/)



**GTX13523 WB Image**

The data was published in the journal PLoS One in 2011. [PMID: 21695208](https://pubmed.ncbi.nlm.nih.gov/21695208/)



For full product information, images and publications, please visit our [website](http://www.genetex.com).