

LAMP2 antibody [GL2A7]

Cat. No. GTX13524

Host	Rat
Clonality	Monoclonal
Isotype	IgG
Application	WB, ICC/IF, IHC-P, FACS, IP
Reactivity	Human, Mouse, Rabbit

Reference (7)
Package
100 µl

APPLICATION

Application Note

ICC: Use at a dilution of 1/100. The antibody will label the presumptive lysosomes and late endosomes in cells that have been permeabilized with saponin. IP: Use at an assay dependent dilution. Optimal dilutions/concentrations should be determined by the end user.

Calculated MW 45 kDa. ([Note](#))

PROPERTIES

Form	Liquid
Buffer	Ascites
Preservative	No preservative
Storage	Store as concentrated solution. Centrifuge briefly prior to opening vial. For short-term storage (1-2 weeks), store at 4°C. For long-term storage, aliquot and store at -20°C or below. Avoid multiple freeze-thaw cycles.
Immunogen	Purified preparation of mouse liver lysosomal membranes.
Purification	Unpurified
Conjugation	Unconjugated

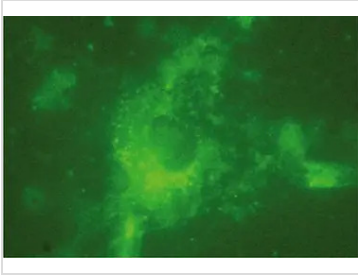
Note For laboratory research use only. Not for any clinical, therapeutic, or diagnostic use in humans or animals. Not for animal or human consumption.

Purchasers shall not, and agree not to enable third parties to, analyze, copy, reverse engineer or otherwise attempt to determine the structure or sequence of the product.



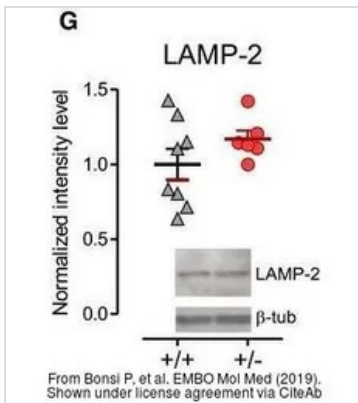
For full product information, images and publications, please visit our [website](#).

DATA IMAGES



GTx13524 ICC/IF Image

Mouse astrocytes stained with VAM-EN003. Cells were fixed using 4% paraformaldehyde and permeabilized using 0.01% saponin



GTx13524 WB Image

The data was published in the journal EMBO Mol Med in 2019. [PMID: 30552094](https://pubmed.ncbi.nlm.nih.gov/30552094/)



For full product information, images and publications, please visit our [website](https://www.genetex.com).