

Cpn10 antibody [M1.2]

Cat. No. GTX13527

Host	Mouse
Clonality	Monoclonal
Isotype	IgG2a
Applications	WB, IP, EIA
Reactivity	Human

Package

50 µg

Applications

Application Note

EIA: Use at an assay dependent dilution. IP: Use at an assay dependent dilution. WB: Use at a concentration of 0.25 µg/ml. Detects a band of approximately 15 kDa (predicted molecular weight: 9.9 kDa). Optimal dilutions/concentrations should be determined by the end user.

Calculated MW 11 kDa. ([Note](#))**Product Note** This antibody will not react with the human or mouse cpn10 homolog nor with E. coli GroES.

Properties

Form	Liquid
Buffer	PBS, 0.1mM PMSF
Preservative	No preservatives
Storage	Store as concentrated solution. Centrifuge briefly prior to opening vial. For short-term storage (1-2 weeks), store at 4°C. For long-term storage, aliquot and store at -20°C or below. Avoid multiple freeze-thaw cycles.
Concentration	0.92 mg/ml (Please refer to the vial label for the specific concentration.)
Immunogen	A 16 residue synthetic MAP peptide KKDDKGQQLPFEVQVG based on C. trachomatis cpn10 (residues 54-69).
Purification	Protein G purified
Conjugation	Unconjugated

Note

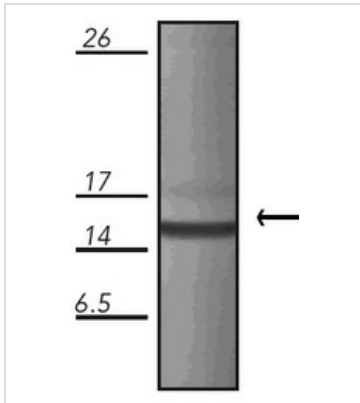
For laboratory research use only. Not for any clinical, therapeutic, or diagnostic use in humans or animals. Not for animal or human consumption.

Purchasers shall not, and agree not to enable third parties to, analyze, copy, reverse engineer or otherwise attempt to determine the structure or sequence of the product.



For full product information, images and publications, please visit our [website](#).

DATA IMAGES

**GTX13527 WB Image**

Western blot analysis of chlamydia-infected human HeLa cell lysate, probed with GTX13527



For full product information, images and publications, please visit our [website](#).