

## Cpn10 antibody

Cat. No. GTX13528

Host	Rabbit
Clonality	Polyclonal
Isotype	IgG
Applications	WB, IP, IHC, RIA
Reactivity	Human, Mouse, Rat, Rabbit, Sheep, Bovine, Dog, Guinea pig, Pig, Xenopus laevis

**Package**  
100 µl

## Applications

## Application Note

IHC: Use at a dilution of 1/400. IP: Use at a dilution of 1/100. RIA: Use at a dilution of 1/100000. WB (colorimetric): Use at a dilution of 1/2000. Detects a band of approximately 10 kDa (predicted molecular weight: 9.9 kDa). WB (ELC): Use at a dilution of 1/5000. Detects a band of approximately 10 kDa (predicted molecular weight: 9.9 kDa). Optimal dilutions/concentrations should be determined by the end user.

**Calculated MW** 11 kDa. ( [Note](#) )

## Properties

Form	Liquid
Buffer	PBS, 50% glycerol
Preservative	0.09% Sodium azide
Storage	Store as concentrated solution. Centrifuge briefly prior to opening vial. For short-term storage (1-2 weeks), store at 4°C. For long-term storage, aliquot and store at -20°C or below. Avoid multiple freeze-thaw cycles.
Immunogen	Synthetic peptide: RDGDILGKYVD conjugated to KLH, corresponding to amino acids 91-101 of Human Cpn10.
Purification	Whole antiserum
Conjugation	Unconjugated

## Note

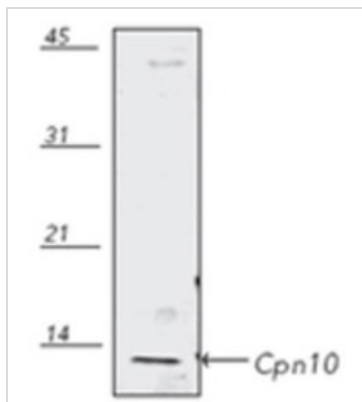
For laboratory research use only. Not for any clinical, therapeutic, or diagnostic use in humans or animals. Not for animal or human consumption.

Purchasers shall not, and agree not to enable third parties to, analyze, copy, reverse engineer or otherwise attempt to determine the structure or sequence of the product.



For full product information, images and publications, please visit our [website](#).

## DATA IMAGES



### GTX13528 WB Image

Western blot analysis of human HeLa (heat shocked) cell lysate, probed with Cpn10 (Hsp10) pAb.



For full product information, images and publications, please visit our [website](https://www.genetex.com).