

Grp75 antibody [30A5]

Cat. No. GTX13529

Host	Mouse
Clonality	Monoclonal
Isotype	IgG1
Applications	WB, ICC/IF, IP, IHC
Reactivity	Human, Mouse, Rat, Rabbit, Sheep, Bovine, Dog, Hamster, Guinea pig, Pig, Monkey, Xenopus laevis

Package

25 µl

Applications

Application Note

Immunohistochemistry (1:50) Western Blot (1:1000, colorimetric) Optimal conditions must be determined individually for each application.

Calculated MW	74 kDa. (Note)
Product Note	This antibody detects an ~75 kDa protein, corresponding to the apparent molecular mass of Glucose Regulated Protein 75 (Grp75) on SDS-PAGE immunoblots.

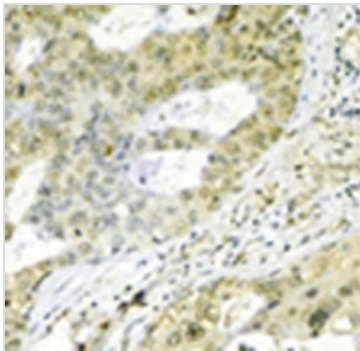
Properties

Form	Liquid
Buffer	PBS, 50% Glycerol, 0.1mM PMSF
Preservative	No preservatives
Storage	Store as concentrated solution. Centrifuge briefly prior to opening vial. For short-term storage (1-2 weeks), store at 4°C. For long-term storage, aliquot and store at -20°C or below. Avoid multiple freeze-thaw cycles.
Concentration	Batch dependent (Please refer to the vial label for the specific concentration.)
Immunogen	Grp75 isolated from human Molt4 cells.
Conjugation	Unconjugated
Note	For laboratory research use only. Not for any clinical, therapeutic, or diagnostic use in humans or animals. Not for animal or human consumption. Purchasers shall not, and agree not to enable third parties to, analyze, copy, reverse engineer or otherwise attempt to determine the structure or sequence of the product.



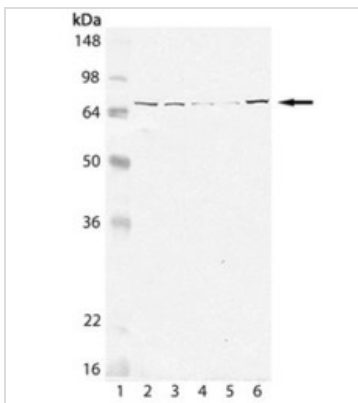
For full product information, images and publications, please visit our [website](#).

DATA IMAGES



GTx13529 IHC Image

Immunohistochemistry analysis of human breast cancer tissue immunohistochemically stained using Grp75 mAb (30A5).



GTx13529 WB Image

Western blot analysis of Grp75/Mortalin, mAb (30A5) (GTx13529):

Lane 1: MW marker

Lane 2: HeLa (heat shocked)

Lane 3: L-929 (heat shocked)

Lane 4: CHO -K1 (heat shocked)

Lane 5: GPC-16 (heat shocked)

Lane 6: PC-12 (heat shocked).



For full product information, images and publications, please visit our [website](https://www.genetex.com).