

## CD81 antibody

**Cat. No. GTX135297**

<b>Host</b>	Rabbit
<b>Clonality</b>	Polyclonal
<b>Isotype</b>	IgG
<b>Applications</b>	WB, ICC/IF, IHC-P, ELISA, Sandwich ELISA
<b>Reactivity</b>	Human, Mouse

References ( 1 )

Package

100 µl, 25 µl

## Applications

**Application Note**

\*Optimal dilutions/concentrations should be determined by the researcher.

Suggested dilution	Recommended dilution
WB	1:500-1:3000
ICC/IF	1:100-1:1000
IHC-P	Assay dependent
ELISA	Assay dependent
Sandwich ELISA	Assay dependent

**Note : Capture : GTX135297, Detection : GTX642463.****Please notice that the detected antibody needs to be conjugated to HRP to function when paired with capture antibody.****Please contact us for custom HRP-conjugated antibody.**

Not tested in other applications.

**Calculated MW** 26 kDa. ( [Note](#) )

## Properties

<b>Form</b>	Liquid
<b>Buffer</b>	PBS, 20% Glycerol
<b>Preservative</b>	0.025% ProClin 300
<b>Storage</b>	Store as concentrated solution. Centrifuge briefly prior to opening vial. For short-term storage (1-2 weeks), store at 4°C. For long-term storage, aliquot and store at -20°C or below. Avoid multiple freeze-thaw cycles.
<b>Concentration</b>	1.39 mg/ml (Please refer to the vial label for the specific concentration.)
<b>Immunogen</b>	Recombinant protein encompassing a sequence within the Extracellular domain of human CD81. The exact sequence is proprietary.
<b>Purification</b>	Purified by antigen-affinity chromatography.



For full product information, images and publications, please visit our [website](#).

**Conjugation**

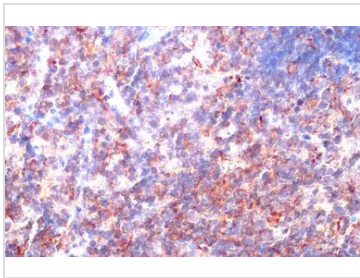
Unconjugated

**Note**

For laboratory research use only. Not for any clinical, therapeutic, or diagnostic use in humans or animals. Not for animal or human consumption.

Purchasers shall not, and agree not to enable third parties to, analyze, copy, reverse engineer or otherwise attempt to determine the structure or sequence of the product.

DATA IMAGES



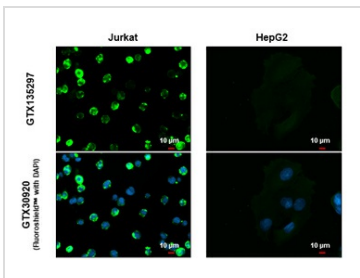
**GTX135297 IHC-P Image**

CD81 antibody detects CD81 protein at cell membrane by immunohistochemical analysis.

Sample: Paraffin-embedded mouse thymus gland.

CD81 stained by CD81 antibody (GTX135297) diluted at 1:500.

Antigen Retrieval: Citrate buffer, pH 6.0, 15 min

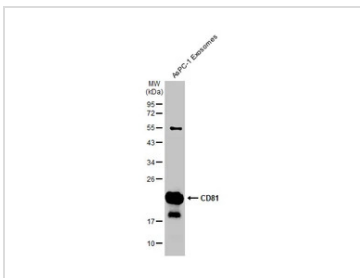


**GTX135297 ICC/IF Image**

CD81 antibody detects CD81 protein by immunofluorescent analysis.

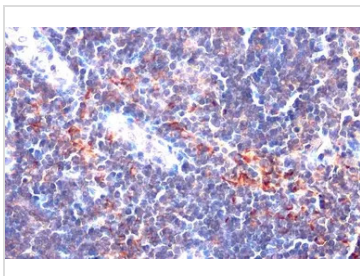
Sample: Jurkat and HepG2 cells were fixed in 4% paraformaldehyde at RT for 15 min.

Green: CD81 stained by CD81 antibody (GTX135297) diluted at 1:500.



**GTX135297 WB Image**

AsPC-1 exosome extracts (5.5 µg) was separated by 12% SDS-PAGE, and the membrane was blotted with CD81 antibody (GTX135297) diluted at 1:500. The HRP-conjugated anti-rabbit IgG antibody (GTX213110-01) was used to detect the primary antibody.



**GTX135297 IHC-P Image**

CD81 antibody detects CD81 protein at cell membrane by immunohistochemical analysis.

Sample: Paraffin-embedded mouse lymph node.

CD81 stained by CD81 antibody (GTX135297) diluted at 1:500.

Antigen Retrieval: Citrate buffer, pH 6.0, 15 min



For full product information, images and publications, please visit our [website](#).