

Fibrinogen antibody

Cat. No. GTX135332

Host	Rabbit
Clonality	Polyclonal
Isotype	IgG
Application	WB, ICC/IF, IHC-P
Reactivity	Human

Package
100 µl, 25 µl

APPLICATION

Application Note

*Optimal dilutions/concentrations should be determined by the researcher.

Suggested dilution	Recommended dilution
WB	1:5000-1:20000
ICC/IF	Assay dependent
IHC-P	Assay dependent

Not tested in other applications.

Calculated MW 95 kDa. ([Note](#))

PROPERTIES

Form	Liquid
Buffer	PBS, 1% BSA, 20% Glycerol
Preservative	0.025% ProClin 300
Storage	Store as concentrated solution. Centrifuge briefly prior to opening vial. For short-term storage (1-2 weeks), store at 4°C. For long-term storage, aliquot and store at -20°C or below. Avoid multiple freeze-thaw cycles.
Concentration	0.32 mg/ml (Please refer to the vial label for the specific concentration.)
Immunogen	Recombinant protein encompassing a sequence within the N-terminus region of human Fibrinogen. The exact sequence is proprietary.
Purification	Purified by antigen-affinity chromatography.
Conjugation	Unconjugated

Note

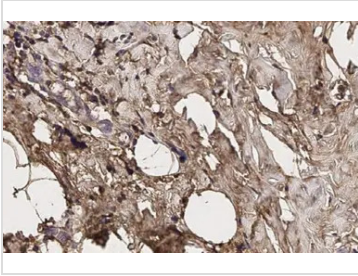
For laboratory research use only. Not for any clinical, therapeutic, or diagnostic use in humans or animals. Not for animal or human consumption.

Purchasers shall not, and agree not to enable third parties to, analyze, copy, reverse engineer or otherwise attempt to determine the structure or sequence of the product.



For full product information, images and publications, please visit our [website](#).

DATA IMAGES



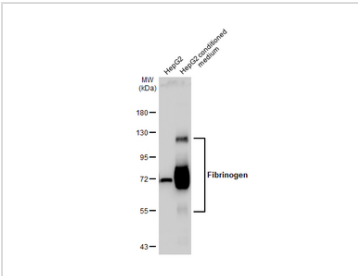
GTX135332 IHC-P Image

Fibrinogen antibody detects secreted Fibrinogen protein by immunohistochemical analysis.

Sample: Paraffin-embedded human breast carcinoma.

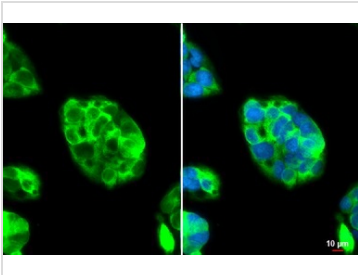
Fibrinogen stained by Fibrinogen antibody (GTX135332) diluted at 1:500.

Antigen Retrieval: Citrate buffer, pH 6.0, 15 min



GTX135332 WB Image

HepG2 whole cell extract and conditioned medium (30 µg) were separated by 7.5% SDS-PAGE, and the membrane was blotted with Fibrinogen antibody (GTX135332) diluted at 1:20000. The HRP-conjugated anti-rabbit IgG antibody (GTX213110-01) was used to detect the primary antibody.



GTX135332 ICC/IF Image

Fibrinogen antibody detects Fibrinogen protein at cytoplasm by immunofluorescent analysis.

Sample: HepG2 cells were fixed in 4% paraformaldehyde at RT for 15 min.

Green: Fibrinogen stained by Fibrinogen antibody (GTX135332) diluted at 1:500.

Blue: Fluoroshield with DAPI (GTX30920).

Scale bar= 10µm.



For full product information, images and publications, please visit our [website](https://www.genetex.com).