

ADAM17 antibody

Cat. No. GTX13535

Host	Goat
Clonality	Polyclonal
Isotype	IgG
Applications	WB, IHC-P
Reactivity	Human

Package

50 µg

Applications

Application Note

*Optimal dilutions/concentrations should be determined by the researcher.

Suggested dilution	Recommended dilution
WB	0.1-0.3µg/ml
IHC-P	3.75µg/ml

Not tested in other applications.

Calculated MW 93 kDa. ([Note](#))

Product Note This antibody is expected to recognise isoform 1 (represented by NP_003174.3) and not isoform 2 (represented by NP_068604).

Properties

Form	Liquid
Buffer	TBS, 0.5% BSA
Preservative	0.02% Sodium azide
Storage	Store as concentrated solution. Centrifuge briefly prior to opening vial. For short-term storage (1-2 weeks), store at 4°C. For long-term storage, aliquot and store at -20°C or below. Avoid multiple freeze-thaw cycles.
Concentration	0.50 mg/ml (Please refer to the vial label for the specific concentration.)
Immunogen	Peptide with sequence LQRQNRVDSKETEC, from the C Terminus of the protein sequence according to NP_003174.3.
Purification	Purified by ammonium sulphate precipitation followed by antigen affinity chromatography
Conjugation	Unconjugated

Note

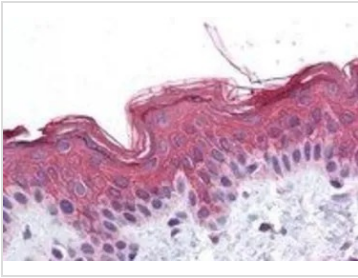
For laboratory research use only. Not for any clinical, therapeutic, or diagnostic use in humans or animals. Not for animal or human consumption.

Purchasers shall not, and agree not to enable third parties to, analyze, copy, reverse engineer or otherwise attempt to determine the structure or sequence of the product.



For full product information, images and publications, please visit our [website](#).

DATA IMAGES

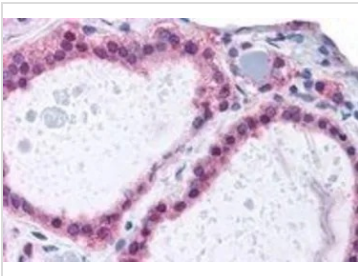


GTX13535 IHC-P Image

IHC-P analysis of human skin using GTX13535 ADAM17 antibody.

Antigen retrieval : citrate buffer pH 6

Dilution : 3.75µg/ml

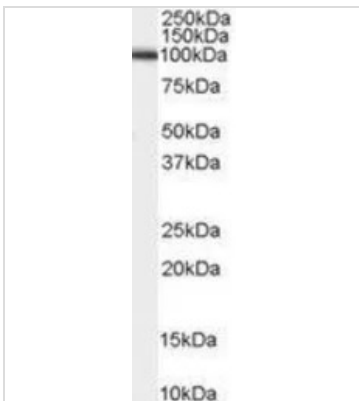


GTX13535 IHC-P Image

IHC-P analysis of human thyroid using GTX13535 ADAM17 antibody.

Antigen retrieval : citrate buffer pH 6

Dilution : 3.75µg/ml

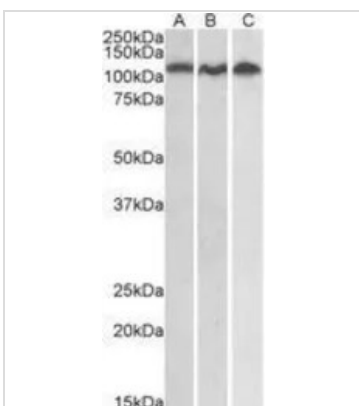


GTX13535 WB Image

WB analysis of human testis lysate using GTX13535 ADAM17 antibody.

Dilution : 0.2µg/ml

Loading : 35µg protein in RIPA buffer



GTX13535 WB Image

WB analysis of Daudi (A), Jurkat (B) and HeLa (C) lysates using GTX13535 ADAM17 antibody.

Dilution : 0.3µg/ml

Loading : 35µg protein in RIPA buffer



For full product information, images and publications, please visit our [website](http://www.genetex.com).