

## PRRS virus Nucleocapsid protein antibody

**Cat. No. GTX135351**

|                     |            |
|---------------------|------------|
| <b>Host</b>         | Rabbit     |
| <b>Clonality</b>    | Polyclonal |
| <b>Isotype</b>      | IgG        |
| <b>Applications</b> | WB, ICC/IF |
| <b>Reactivity</b>   | PRRS virus |

References ( 1 )

Package

100 µl, 25 µl

## Applications

**Application Note**

\*Optimal dilutions/concentrations should be determined by the researcher.

| Suggested dilution | Recommended dilution |
|--------------------|----------------------|
| WB                 | 1:1000-1:10000       |
| ICC/IF             | Assay dependent      |

Not tested in other applications.

**Product Note** This antibody recognizes Nucleocapsid protein of PRRSV Lelystad and may cross react with PRRSV US5 and VR-2332.

## Properties

|                      |  |
|----------------------|--|
| <b>Form</b>          | Liquid   |
| <b>Buffer</b>        | PBS, 1% BSA, 20% Glycerol  |
| <b>Preservative</b>  | 0.025% ProClin 300   |
| <b>Storage</b>       | Store as concentrated solution. Centrifuge briefly prior to opening vial. For short-term storage (1-2 weeks), store at 4°C. For long-term storage, aliquot and store at -20°C or below. Avoid multiple freeze-thaw cycles. |
| <b>Concentration</b> | 0.4 mg/ml (Please refer to the vial label for the specific concentration.)   |
| <b>Immunogen</b>     | Full length PRRS Virus Nucleocapsid recombinant protein. (strain Lelystad)   |
| <b>Purification</b>  | Purified by antigen-affinity chromatography.   |
| <b>Conjugation</b>   | Unconjugated   |

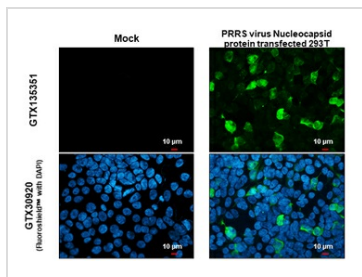
**Note**

For laboratory research use only. Not for any clinical, therapeutic, or diagnostic use in humans or animals. Not for animal or human consumption.

Purchasers shall not, and agree not to enable third parties to, analyze, copy, reverse engineer or otherwise attempt to determine the structure or sequence of the product.



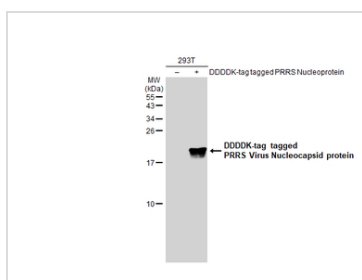
For full product information, images and publications, please visit our [website](#).

**DATA IMAGES**

**GTX135351 ICC/IF Image**

PRRS Virus Nucleocapsid protein antibody detects PRRS Virus Nucleocapsid protein protein at cytoplasm by immunofluorescent analysis.

Sample: Mock and transfected 293T cells were fixed in 4% paraformaldehyde at RT for 15 min.

Green: PRRS Virus Nucleocapsid protein stained by PRRS Virus Nucleocapsid protein antibody (GTX135351) diluted at 1:500.


**GTX135351 WB Image**

Non-transfected (-) and transfected (+) 293T whole cell extracts (30 µg) were separated by 15% SDS-PAGE, and the membrane was blotted with PRRS Virus Nucleocapsid protein antibody (GTX135351) diluted at 1:5000. The HRP-conjugated anti-rabbit IgG antibody (GTX213110-01) was used to detect the primary antibody.



For full product information, images and publications, please visit our [website](#).