

## PRRS virus Nucleocapsid protein antibody

Cat. No. GTX135352

Host	Rabbit
Clonality	Polyclonal
Isotype	IgG
Applications	WB, ICC/IF
Reactivity	PRRS virus

Package  
100 µl, 25 µl

## Applications

## Application Note

\*Optimal dilutions/concentrations should be determined by the researcher.

Suggested dilution	Recommended dilution
WB	1:1000-1:10000
ICC/IF	Assay dependent

Not tested in other applications.

## Properties

Form	Liquid
Buffer	PBS, 20% Glycerol
Preservative	0.025% ProClin 300
Storage	Store as concentrated solution. Centrifuge briefly prior to opening vial. For short-term storage (1-2 weeks), store at 4°C. For long-term storage, aliquot and store at -20°C or below. Avoid multiple freeze-thaw cycles.
Concentration	0.55 mg/ml (Please refer to the vial label for the specific concentration.)
Immunogen	Carrier-protein conjugated synthetic peptide encompassing a sequence within the N-terminus region of PRRS Virus Nucleocapsid protein (strain Lelystad). The exact sequence is proprietary.
Purification	Purified by antigen-affinity chromatography.
Conjugation	Unconjugated

## Note

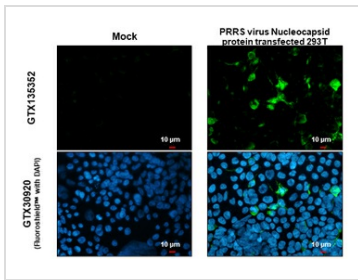
For laboratory research use only. Not for any clinical, therapeutic, or diagnostic use in humans or animals. Not for animal or human consumption.

Purchasers shall not, and agree not to enable third parties to, analyze, copy, reverse engineer or otherwise attempt to determine the structure or sequence of the product.



For full product information, images and publications, please visit our [website](#).

## DATA IMAGES

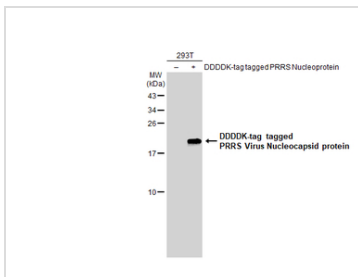


### GTX135352 ICC/IF Image

PRRS virus Nucleocapsid protein antibody detects PRRS virus Nucleocapsid protein protein at cytoplasm by immunofluorescent analysis.

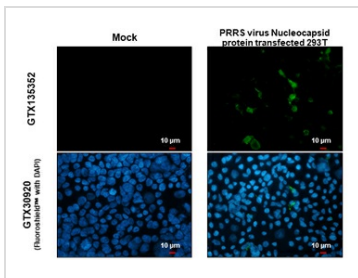
Sample: Mock and transfected 293T cells were fixed in 4% paraformaldehyde at RT for 15 min.

Green: PRRS virus Nucleocapsid protein stained by PRRS virus Nucleocapsid protein antibody (GTX135352) diluted at 1:2000.



### GTX135352 WB Image

Non-transfected (–) and transfected (+) 293T whole cell extracts (30 μg) were separated by 15% SDS-PAGE, and the membrane was blotted with PRRS Virus Nucleocapsid protein antibody (GTX135352) diluted at 1:5000. The HRP-conjugated anti-rabbit IgG antibody (GTX213110-01) was used to detect the primary antibody.



### GTX135352 ICC/IF Image

PRRS virus Nucleocapsid protein antibody detects PRRS virus Nucleocapsid protein protein at cytoplasm by immunofluorescent analysis.

Sample: Mock and transfected 293T cells were fixed in 4% paraformaldehyde at RT for 15 min.

Green: PRRS virus Nucleocapsid protein stained by PRRS virus Nucleocapsid protein antibody (GTX135352) diluted at 1:2000.



For full product information, images and publications, please visit our [website](https://www.genetex.com).