

## SARS-CoV-2 (COVID-19) Nucleocapsid protein, His tag

Cat. No. GTX135357-pro

Applications ELISA, Sandwich ELISA

Species SARS Coronavirus 2

References ( 2 )

Package

500 µg, 100 µg

## Applications

## Application Note

Recommended antibody pairs for sandwich ELISA:

Capture: GTX635689, Detection: GTX635686-01 or Capture: GTX135357 / GTX135361, Detection: GTX632269.

## Properties

Form Liquid

Buffer PBS

Preservative No preservatives

Storage Store as concentrated solution. Centrifuge briefly prior to opening vial. Aliquot and store at -20°C or below. Avoid multiple freeze-thaw cycles. For long-term storage after reconstitution, aliquot and store at -70°C or below. Do not vortex.

Concentration 0.2 mg/ml (Please refer to the vial label for the specific concentration.)

Region/Sequence N-terminal His tagged full length protein of YP\_009724397.2

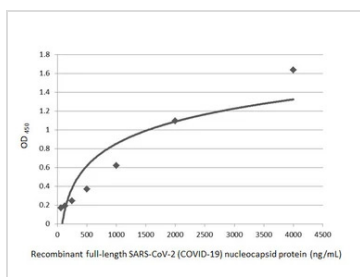
Expression System E. coli

Purity &gt;90%

Conjugation Unconjugated

Note For *In vitro* laboratory use only. Not for any clinical, therapeutic, or diagnostic use in humans or animals. Not for animal or human consumption.

## DATA IMAGES

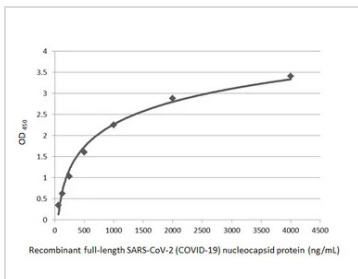


## GTX135357-pro ELISA Image

Sandwich ELISA detection of recombinant full-length SARS-CoV-2 (COVID-19) nucleocapsid protein (GTX135357-pro) using GTX135357 as capture antibody at concentration of 5 µg/mL and GTX632269 as detection antibody at concentration of 1 µg/mL. Mouse IgG antibody (HRP) (GTX213111-01) was diluted at 1:10000 and used to detect the primary antibody.

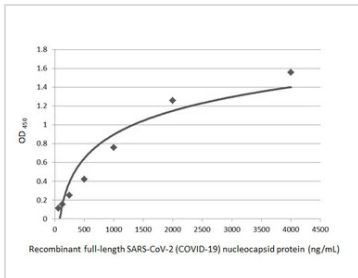


For full product information, images and publications, please visit our [website](#).



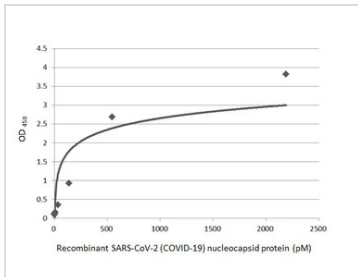
#### GTx135357-pro ELISA Image

Indirect ELISA analysis was performed by coating plate with 50  $\mu$ L of recombinant full-length SARS-CoV-2 (COVID-19) nucleocapsid protein (GTx135357-pro) at concentrations ranging from 0.0625  $\mu$ g/mL to 4  $\mu$ g/mL. The coated protein is detected with SARS-CoV-2 (COVID-19) nucleocapsid antibody (GTx135357) at 1  $\mu$ g/mL. Rabbit IgG antibody (HRP) (GTx213110-01) was diluted at 1:10000 and used to detect the primary antibody.



#### GTx135357-pro ELISA Image

Sandwich ELISA detection of recombinant full-length SARS-CoV-2 (COVID-19) nucleocapsid protein (GTx135357-pro) using GTx135361 as capture antibody at concentration of 5  $\mu$ g/mL and GTx632269 as detection antibody at concentration of 1  $\mu$ g/mL. Mouse IgG antibody (HRP) (GTx213111-01) was diluted at 1:10000 and used to detect the primary antibody.

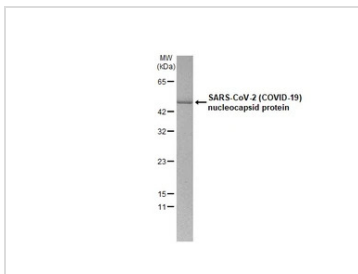


#### GTx135357-pro ELISA Image

Sandwich ELISA detection of recombinant SARS-CoV-2 (COVID-19) nucleocapsid protein, His tag (GTx135357-pro) using antibodies as below.

**Capture:** SARS-CoV-2 (COVID-19) nucleocapsid antibody [HL5511] (GTx635689) (5  $\mu$ g/mL)

**Detection:** SARS-CoV-2 (COVID-19) nucleocapsid antibody [HL448] (HRP) (GTx635686-01) (1  $\mu$ g/mL)



#### GTx135357-pro Image

3 $\mu$ g of GTx135357-pro His tag-tagged SARS-CoV-2 (COVID-19) nucleocapsid protein analyzed using SDS-PAGE and stained with coomassie blue and captured by monochrome camera.



For full product information, images and publications, please visit our [website](https://www.genetex.com).