

## SARS-CoV-2 (COVID-19) Spike antibody

Cat. No. GTX135360

Host	Rabbit
Clonality	Polyclonal
Isotype	IgG
Applications	WB, ICC/IF, ELISA, Sandwich ELISA
Reactivity	SARS Coronavirus 2

References ( 2 )

Package

100 µl, 25 µl

## Applications

## Application Note

\*Optimal dilutions/concentrations should be determined by the researcher.

Suggested dilution	Recommended dilution
WB	1:1000-1:10000
ICC/IF	1:100-1:1000
ELISA	Assay dependent
Sandwich ELISA	Assay dependent

**Note : Capture : GTX632604, Detection: GTX135360**

Not tested in other applications.

## Product Note

This antibody detects SARS-CoV-2 spike protein (S1 subunit), but does not cross-react with SARS-CoV or MERS-CoV spike proteins based on our internal testing.

## Properties

Form	Liquid
Buffer	PBS, 20% Glycerol
Preservative	0.025% ProClin 300
Storage	Store as concentrated solution. Centrifuge briefly prior to opening vial. For short-term storage (1-2 weeks), store at 4°C. For long-term storage, aliquot and store at -20°C or below. Avoid multiple freeze-thaw cycles.
Concentration	0.5 mg/ml (Please refer to the vial label for the specific concentration.)
Immunogen	Carrier-protein conjugated synthetic peptide encompassing a sequence within the N-terminal region of SARS-CoV-2 (COVID-19) spike (S1) (SARS-CoV-2 (strain Wuhan-Hu-1)). The exact sequence is proprietary.
Purification	Purified by antigen-affinity chromatography.
Conjugation	Unconjugated



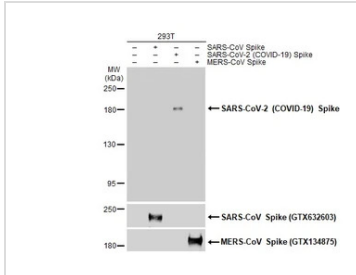
For full product information, images and publications, please visit our [website](#).

For laboratory research use only. Not for any clinical, therapeutic, or diagnostic use in humans or animals. Not for animal or human consumption.

#### Note

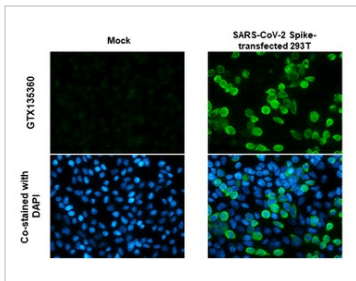
Purchasers shall not, and agree not to enable third parties to, analyze, copy, reverse engineer or otherwise attempt to determine the structure or sequence of the product.

#### DATA IMAGES



#### GTX135360 WB Image

Non-transfected (–) and transfected (+) 293T whole cell extracts (30 µg) were separated by 5% SDS-PAGE, and the membrane was blotted with SARS-CoV-2 (COVID-19) spike antibody (GTX135360) diluted at 1:5000. The HRP-conjugated anti-rabbit IgG antibody (GTX213110-01) was used to detect the primary antibody.



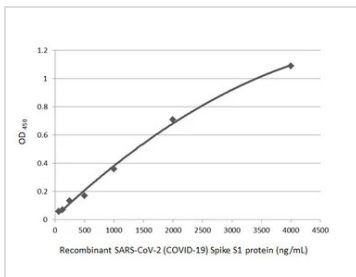
#### GTX135360 ICC/IF Image

SARS-CoV-2 (COVID-19) Spike antibody detects SARS-CoV-2 (COVID-19) Spike protein by immunofluorescent analysis.

Sample: Mock and transfected 293T cells were fixed in 4% paraformaldehyde at RT for 15 min.

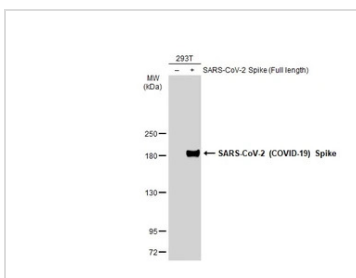
Green: SARS-CoV-2 (COVID-19) Spike stained by SARS-CoV-2 (COVID-19) Spike antibody (GTX135360) diluted at 1:1000.

Blue: Fluoroshield with DAPI (GTX30920).



#### GTX135360 ELISA Image

Indirect ELISA analysis performed by coating plate with recombinant SARS-CoV-2 (COVID-19) Spike S1 protein, His and Avi tag (active) protein (GTX01548-pro) (4000–62.5 ng/mL). Coated protein probed with SARS-CoV-2 (COVID-19) Spike antibody (GTX135360) (1 µg/mL). Rabbit IgG antibody (HRP) (GTX213110-01) (1:10000) detected bound primary antibody.



#### GTX135360 WB Image

Non-transfected (–) and transfected (+) 293T whole cell extracts (30 µg) were separated by 5% SDS-PAGE, and the membrane was blotted with SARS-CoV-2 (COVID-19) Spike antibody (GTX135360) diluted at 1:5000. The HRP-conjugated anti-rabbit IgG antibody (GTX213110-01) was used to detect the primary antibody.



For full product information, images and publications, please visit our [website](https://www.genetex.com).