

## Estrogen Receptor alpha antibody [h-151]

**Cat. No. GTX13538**

<b>Host</b>	Mouse
<b>Clonality</b>	Monoclonal
<b>Isotype</b>	IgG1
<b>Applications</b>	WB, ICC/IF, IP
<b>Reactivity</b>	Human, Mouse, Rat, Bovine

References ( 3 )

Package

100 µg

## Applications

**Application Note**

ICC/IF: Use at an assay dependent dilution. IP: Use at a concentration of 15 µg/ml. WB: 1:250. Predicted molecular weight: 71.4 kDa. Optimal dilutions/concentrations should be determined by the end user.

**Calculated MW** 66 kDa. ( [Note](#) )**Product Note**

Binding specificity was confirmed in peptide inhibition studies with the intact protein. The antibody does not recognize the native estrogen receptor in the inactive 8S oligomeric state, but reacts efficiently with the activated 4S receptor. In immunoprecipitation studies, this antibody has been shown to only IP the active receptor.

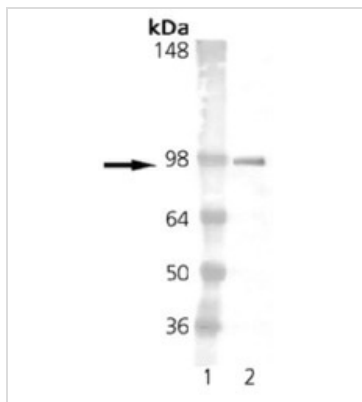
## Properties

<b>Form</b>	Liquid
<b>Buffer</b>	PBS, 50% Glycerol, 0.1mM PMSF
<b>Preservative</b>	No preservatives
<b>Storage</b>	Store as concentrated solution. Centrifuge briefly prior to opening vial. For short-term storage (1-2 weeks), store at 4°C. For long-term storage, aliquot and store at -20°C or below. Avoid multiple freeze-thaw cycles.
<b>Concentration</b>	1 mg/ml (Please refer to the vial label for the specific concentration.)
<b>Immunogen</b>	Synthetic peptide: RAANLWSPMLIKR conjugated to KLH, corresponding to amino acids 287-300 of Human Estrogen Receptor.
<b>Purification</b>	Protein G purified
<b>Conjugation</b>	Unconjugated
<b>Note</b>	For laboratory research use only. Not for any clinical, therapeutic, or diagnostic use in humans or animals. Not for animal or human consumption.  Purchasers shall not, and agree not to enable third parties to, analyze, copy, reverse engineer or otherwise attempt to determine the structure or sequence of the product.



For full product information, images and publications, please visit our [website](#).

## DATA IMAGES

**GTX13538 WB Image**

Western blot analysis of ESR1:

Lane 1: MWM

Lane 2: Estrogen Receptor 1 GST-tagged ER1 protein control runs at 92 kDa



For full product information, images and publications, please visit our [website](#).