

SARS-CoV-2 (COVID-19) Spike S2 / S2' antibody

Cat No. GTX135386

Host	Rabbit
Clonality	Polyclonal
Isotype	IgG
Application	WB, ICC/IF, ELISA, Sandwich ELISA
Reactivity	SARS Coronavirus 2

Package
100 µl, 25 µl

APPLICATION

Application Note

*Optimal dilutions/concentrations should be determined by the researcher.

Suggested dilution	Dilution
WB	1:500-1:3000
ICC/IF	1:100-1:1000
ELISA	Assay dependent
Sandwich ELISA	Assay dependent

Note : Capture : GTX632604, Detection: GTX135386

Not tested in other applications.

Product Note

This antibody detects SARS-CoV-2 Spike protein, but does not cross-react with SARS-CoV or MERS-CoV spike proteins based on our internal testing.

PROPERTIES

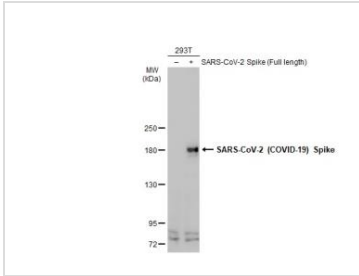
Form	Liquid
Buffer	1XPBS (pH7), 20% Glycerol
Preservative	0.025% ProClin 300
Storage	Store as concentrated solution. Centrifuge briefly prior to opening vial. For short-term storage (1-2 weeks), store at 4°C. For long-term storage, aliquot and store at -20°C or below. Avoid multiple freeze-thaw cycles.
Concentration	1 mg/ml (Please refer to the vial label for the specific concentration.)
Immunogen	Carrier-protein conjugated synthetic peptide encompassing a sequence within the center region of SARS-CoV-2 Spike (S2). (SARS-CoV-2 (strain Wuhan-Hu-1)). The exact sequence is proprietary.
Purification	Purified by antigen-affinity chromatography.
Conjugation	Unconjugated



For full product information, images and publications, please visit our [website](#).

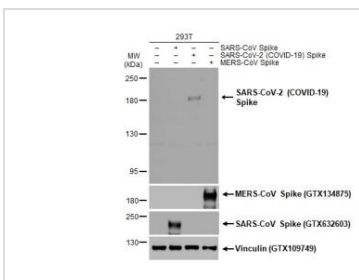
Note For laboratory use only. Not for any clinical, therapeutic, or diagnostic use in humans or animals. Not for animal or human consumption.

DATA IMAGES



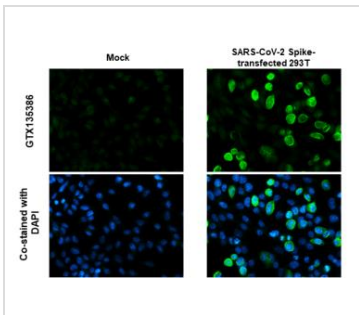
GTX135386 WB Image

Non-transfected (-) and transfected (+) 293T whole cell extracts (30 µg) were separated by 5% SDS-PAGE, and the membrane was blotted with SARS-CoV-2 (COVID-19) Spike S2 / S2' antibody (GTX135386) diluted at 1:1000. The HRP-conjugated anti-rabbit IgG antibody (GTX213110-01) was used to detect the primary antibody.



GTX135386 WB Image

Non-transfected (-) and transfected (+) 293T whole cell extracts (30 µg) were separated by 5% SDS-PAGE, and the membrane was blotted with SARS-CoV-2 (COVID-19) Spike S2 / S2' antibody (GTX135386) diluted at 1:1000. The HRP-conjugated anti-rabbit IgG antibody (GTX213110-01) was used to detect the primary antibody.



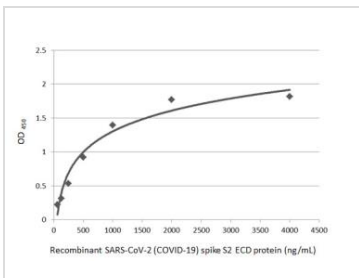
GTX135386 ICC/IF Image

SARS-CoV-2 (COVID-19) Spike antibody detects SARS-CoV-2 (COVID-19) Spike protein by immunofluorescent analysis.

Sample: Mock and SARS-CoV-2 Spike-transfected 293T cells were fixed in 4% paraformaldehyde at RT for 15 min.

Green: SARS-CoV-2 (COVID-19) Spike stained by SARS-CoV-2 (COVID-19) Spike antibody (GTX135386) diluted at 1:1000.

Blue: Fluoroshield with DAPI (GTX30920).



GTX135386 ELISA Image

Sandwich ELISA detection of recombinant SARS-CoV-2 (COVID-19) spike S2 ECD protein using GTX632604 as capture antibody at concentration of 5 µg/mL and GTX135386 as detection antibody at concentration of 1 µg/mL. Rabbit IgG antibody (HRP) (GTX213110-01) was diluted at 1:10000 and used to detect the primary antibody.



For full product information, images and publications, please visit our [website](#).