

Nucleolin antibody [4E2]

Cat. No. GTX13541

Host	Mouse
Clonality	Monoclonal
Isotype	IgG1
Applications	WB, ICC/IF, ChIP assay, IHC
Reactivity	Human, Bovine

References (9)

Package

50 µg

Applications

Application Note

ICC: Use at a concentration of 1 - 10 µg/ml. IHC: Use at a concentration of 1 - 10 µg/ml. WB: Use at a concentration of 1 µg/ml. Predicted molecular weight: 100 kDa. This antibody allows in situ detection of nucleolar protein in Hep-II cell and paraffin embedded tissue section. Paraffin embedded sections should be processed under microwave treatment. Optimal dilutions/concentrations should be determined by the end user.

Calculated MW 77 kDa. ([Note](#))

Properties

Form	Liquid
Buffer	50% Glycerol, PBS
Preservative	No preservatives
Storage	Store as concentrated solution. Centrifuge briefly prior to opening vial. For short-term storage (1-2 weeks), store at 4°C. For long-term storage, aliquot and store at -20°C or below. Avoid multiple freeze-thaw cycles.
Concentration	1 mg/ml (Please refer to the vial label for the specific concentration.)
Immunogen	Human nucleolin protein from Raji cell extract.
Purification	Protein A purified This antibody was affinity purified.
Conjugation	Unconjugated

Note

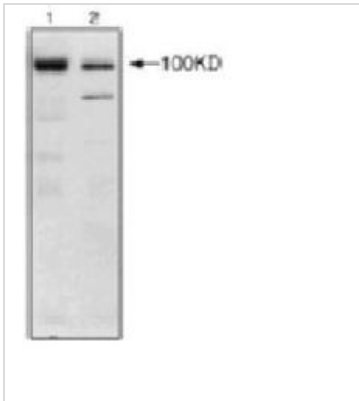
For laboratory research use only. Not for any clinical, therapeutic, or diagnostic use in humans or animals. Not for animal or human consumption.

Purchasers shall not, and agree not to enable third parties to, analyze, copy, reverse engineer or otherwise attempt to determine the structure or sequence of the product.

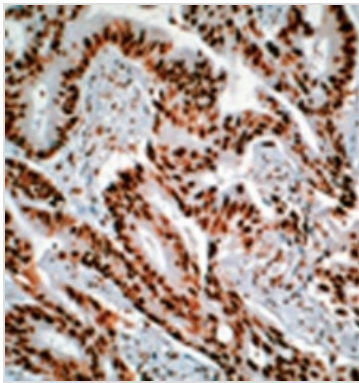


For full product information, images and publications, please visit our [website](#).

DATA IMAGES

**GTX13541 WB Image**

Western Blot analysis using Nucleolin [4E2] antibody (GTX13541) on HL60 (1) and ZR-75 (2) cell extracts

**GTX13541 IHC Image**

Immunohistochemistry analysis of nuclear staining of colon cancer sections using Nucleolin mAb (4E2).



For full product information, images and publications, please visit our [website](#).