

Caveolin 2 (phospho Ser36) antibody

Cat. No. GTX13544

| | |
|---------------------|------------|
| Host | Rabbit |
| Clonality | Polyclonal |
| Isotype | IgG |
| Applications | WB |
| Reactivity | Human |

Package

25 µg

Applications

Application Note

WB: Use at a concentration of 0.1 - 1 µg/ml. Detects a band of approximately 24 kDa (predicted molecular weight: 18.2 kDa). Optimal dilutions/concentrations should be determined by the end user.

Calculated MW 18 kDa. ([Note](#))

Product Note This antibody is specific for Caveolin 2 phosphorylated at serine 36 and does not detect non-phosphorylated Caveolin 2.

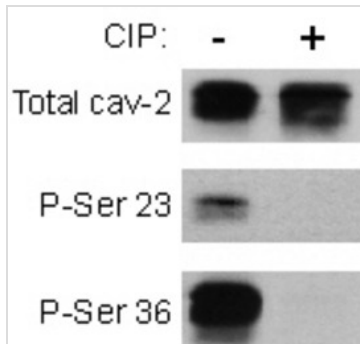
Properties

| | |
|----------------------|--|
| Form | Liquid |
| Buffer | 50% Glycerol, 1% BSA |
| Preservative | 0.01% Thimerosal |
| Storage | Store as concentrated solution. Centrifuge briefly prior to opening vial. For short-term storage (1-2 weeks), store at 4°C. For long-term storage, aliquot and store at -20°C or below. Avoid multiple freeze-thaw cycles. |
| Concentration | 0.5 mg/ml (Please refer to the vial label for the specific concentration.) |
| Immunogen | Human synthetic peptide corresponding to amino acids 32-45 of caveolin 2 phosphorylated on serine 36. |
| Purification | Immunogen affinity purified The affinity purified product has been cross adsorbed against the non phosphorylated peptide to remove antibodies that may detect the non phosphorylated form of the protein. |
| Conjugation | Unconjugated |
| Note | For laboratory research use only. Not for any clinical, therapeutic, or diagnostic use in humans or animals. Not for animal or human consumption. Purchasers shall not, and agree not to enable third parties to, analyze, copy, reverse engineer or otherwise attempt to determine the structure or sequence of the product. |



For full product information, images and publications, please visit our [website](#).

DATA IMAGES



GTX13544 WB Image

30 mg of lysates from LNCaP cells expressing caveolin-2 were incubated without (lane 1) or with calf intestinal phosphatase (CIP; lane 2) resolved on 12% SDS-PAGE, transferred onto nitrocellulose membrane, and western blotted with the following caveolin-2 specific antibodies: total caveolin-2 (non-phospho serine 23 GTX13542; top panel), phospho-serine 23 (GTX13543; middle panel), and phospho-serine 36 (GTX13544; bottom panel)



For full product information, images and publications, please visit our [website](https://www.genetex.com).