

# CD40 antibody

**Cat. No. GTX13545**

<b>Host</b>	Rabbit
<b>Clonality</b>	Polyclonal
<b>Isotype</b>	IgG
<b>Applications</b>	WB
<b>Reactivity</b>	Human, Mouse, Rat, Rabbit, Sheep, Dog, Hamster, Guinea pig, Pig, Monkey

**Package**

50 µg

## Applications

### Application Note

Recommended dilutions: WB: 1/1000. Detects a band of approximately 45 kDa (predicted molecular weight: 34 kDa). Optimal dilutions/concentrations should be determined by the end user.

<b>Calculated MW</b>	31 kDa. ( <a href="#">Note</a> )
<b>Product Note</b>	The antibody specificity is confirmed by specific peptide inhibition in immunoblotting studies.

## Properties

<b>Form</b>	Liquid
<b>Buffer</b>	PBS, 50% Glycerol
<b>Preservative</b>	0.09% Sodium azide
<b>Storage</b>	Store as concentrated solution. Centrifuge briefly prior to opening vial. For short-term storage (1-2 weeks), store at 4°C. For long-term storage, aliquot and store at -20°C or below. Avoid multiple freeze-thaw cycles.
<b>Concentration</b>	1 mg/ml (Please refer to the vial label for the specific concentration.)
<b>Immunogen</b>	Synthetic peptide: CQPVTQEDGKESRISVQERQ conjugated to KLH, corresponding to amino acids 258-277 of Human CD40.
<b>Purification</b>	Affinity purified with antigen
<b>Conjugation</b>	Unconjugated

### Note

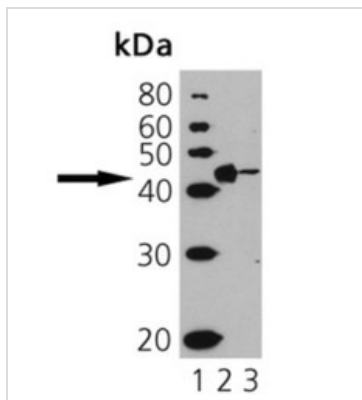
For laboratory research use only. Not for any clinical, therapeutic, or diagnostic use in humans or animals. Not for animal or human consumption.

Purchasers shall not, and agree not to enable third parties to, analyze, copy, reverse engineer or otherwise attempt to determine the structure or sequence of the product.



For full product information, images and publications, please visit our [website](#).

## DATA IMAGES



### GTX13545 WB Image

"Western blot analysis of CD40: Lane 1: MWM Lane 2: ESK4 cell lysate Lane 3: Molt 4 cell lysate."



For full product information, images and publications, please visit our [website](#).