

PSD95 antibody [7E3-1B8]

Cat. No. GTX13552

Host	Mouse
Clonality	Monoclonal
Isotype	IgG2a
Applications	WB, ICC/IF, IP
Reactivity	Mouse, Rat, Bovine

Package
50 µg

Applications

Application Note

ICC: Use at an assay dependent dilution. IP: Use at an assay dependent dilution. WB: Use at a concentration of 1 µg/ml. Detects a band of approximately 100 kDa. Optimal dilutions/concentrations should be determined by the end user.

Calculated MW 80 kDa. ([Note](#))

Properties

Form	Liquid
Buffer	PBS, 50% Glycerol
Preservative	0.09% Sodium azide
Storage	Store as concentrated solution. Centrifuge briefly prior to opening vial. For short-term storage (1-2 weeks), store at 4°C. For long-term storage, aliquot and store at -20°C or below. Avoid multiple freeze-thaw cycles.
Concentration	1 mg/ml (Please refer to the vial label for the specific concentration.)
Immunogen	Recombinant full length protein (Rat).
Purification	Protein G purified
Conjugation	Unconjugated

Note

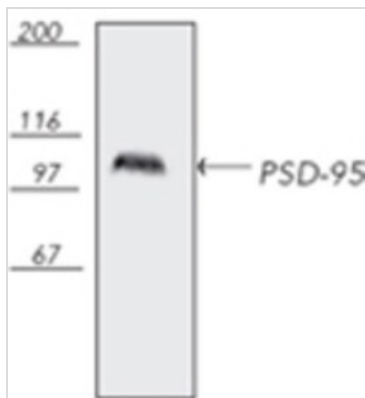
For laboratory research use only. Not for any clinical, therapeutic, or diagnostic use in humans or animals. Not for animal or human consumption.

Purchasers shall not, and agree not to enable third parties to, analyze, copy, reverse engineer or otherwise attempt to determine the structure or sequence of the product.



For full product information, images and publications, please visit our [website](#).

DATA IMAGES



GTX13552 WB Image

Western blot analysis of bovine brain tissue extract, probed with PSD-95, mAb (7E3-1B8).



For full product information, images and publications, please visit our [website](#).