

## TLR4 antibody

**Cat. No. GTX13556**

<b>Host</b>	Rabbit
<b>Clonality</b>	Polyclonal
<b>Isotype</b>	IgG
<b>Applications</b>	WB, ICC/IF, IHC-P, IHC-Fr, FCM
<b>Reactivity</b>	Human, Mouse

References ( 1 )

Package

100 µg

## Applications

**Application Note**

\*Optimal dilutions/concentrations should be determined by the researcher.

Suggested dilution	Recommended dilution
WB	1 - 3 µg/ml
ICC/IF	1:50
IHC-P	1:50
IHC-Fr	1:10 - 1:500
FCM	1 µg / 10 <sup>6</sup> cells

Not tested in other applications.

**Calculated MW** 96 kDa. ( [Note](#) )

## Properties

<b>Form</b>	Liquid
<b>Buffer</b>	PBS
<b>Preservative</b>	0.05% Sodium azide
<b>Storage</b>	Store as concentrated solution. Centrifuge briefly prior to opening vial. For short-term storage (1-2 weeks), store at 4°C. For long-term storage, aliquot and store at -20°C or below. Avoid multiple freeze-thaw cycles.
<b>Concentration</b>	1 mg/ml (Please refer to the vial label for the specific concentration.)
<b>Immunogen</b>	This antibody was developed against a sythetic peptide corresponding to amino acids 420-456 of human TLR4.
<b>Purification</b>	Protein G purified
<b>Conjugation</b>	Unconjugated



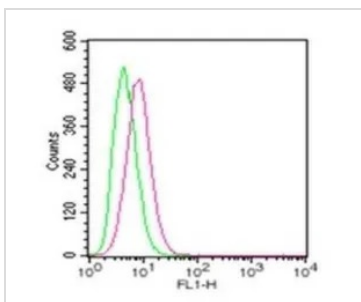
For full product information, images and publications, please visit our [website](#).

For laboratory research use only. Not for any clinical, therapeutic, or diagnostic use in humans or animals. Not for animal or human consumption.

**Note**

Purchasers shall not, and agree not to enable third parties to, analyze, copy, reverse engineer or otherwise attempt to determine the structure or sequence of the product.

DATA IMAGES



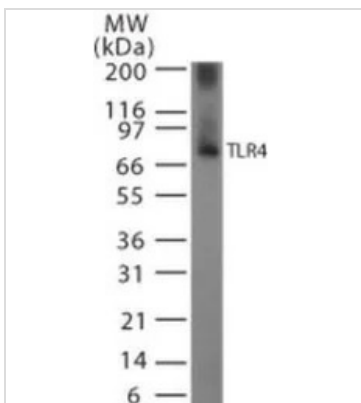
**GTX13556 FCM Image**

FACS analysis of RAW264.7 cells using GTX13556 TLR4 antibody.

Red : Primary antibody

Green : isotype control

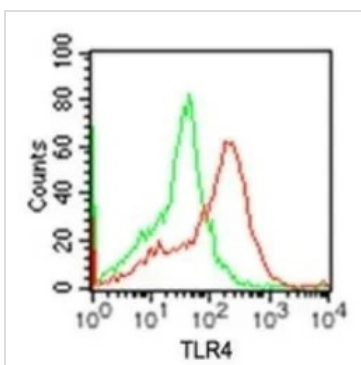
Antibody amount : 2µg



**GTX13556 WB Image**

WB analysis of recombinant mouse TLR4 (partial) protein using GTX13556 TLR4 antibody.

Dilution : 2 µg/ml



**GTX13556 FCM Image**

FACS analysis of mouse macrophage cells using GTX13556 TLR4 antibody.

Red : primary antibody

Green : isotype control

Antibody amount : 1µg



For full product information, images and publications, please visit our [website](#).