

Hepatitis D virus Large delta protein antibody

Cat. No. GTX135574

Host	Rabbit
Clonality	Polyclonal
Isotype	IgG
Applications	WB, ICC/IF, IHC-P (cell pellet)
Reactivity	Hepatitis D virus

★★★★★ Review (1)

Package
100 µl, 25 µl

Applications

Application Note

*Optimal dilutions/concentrations should be determined by the researcher.

Suggested dilution	Recommended dilution
WB	1:1000-1:10000
ICC/IF	Assay dependent
IHC-P (cell pellet)	Assay dependent

Not tested in other applications.

Product Note

Based on both internal and collaborating lab testing, this antibody is specific for HDV large delta antigen and does not detect HDV small delta antigen.

Properties

Form	Liquid
Buffer	PBS, 1% BSA, 20% Glycerol
Preservative	0.025% ProClin 300
Storage	Store as concentrated solution. Centrifuge briefly prior to opening vial. For short-term storage (1-2 weeks), store at 4°C. For long-term storage, aliquot and store at -20°C or below. Avoid multiple freeze-thaw cycles.
Concentration	0.34 mg/ml (Please refer to the vial label for the specific concentration.)
Immunogen	Carrier-protein conjugated synthetic peptide encompassing a sequence within the C-terminus region of Hepatitis D virus Large delta protein (HDV genotype I (strain D380)). The exact sequence is proprietary.
Purification	Purified by antigen-affinity chromatography.
Conjugation	Unconjugated



For full product information, images and publications, please visit our [website](#).

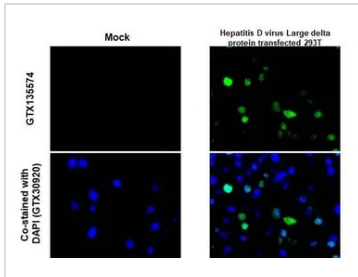
Date 2026 / 02 / 03 Page 1 of 2

For laboratory research use only. Not for any clinical, therapeutic, or diagnostic use in humans or animals. Not for animal or human consumption.

Note

Purchasers shall not, and agree not to enable third parties to, analyze, copy, reverse engineer or otherwise attempt to determine the structure or sequence of the product.

DATA IMAGES



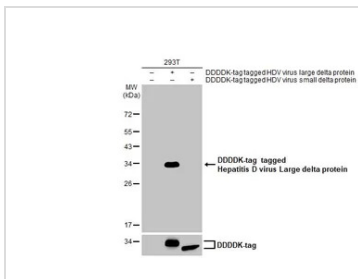
GTX135574 IHC-P (cell pellet) Image

Hepatitis D virus Large delta protein antibody detects Hepatitis D virus Large delta protein at cytoplasm by immunohistochemical analysis.

Sample: Paraffin-embedded mock and Hepatitis D virus Large delta protein transfected 293T cell pellet.

Green: Hepatitis D virus Large delta protein stained by Hepatitis D virus Large delta protein antibody (GTX135574) diluted at 1:1000.

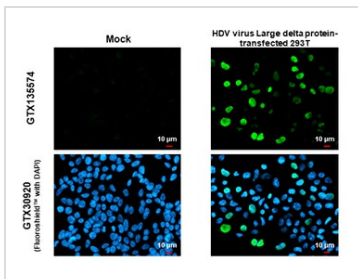
Antigen Retrieval: Citrate buffer, pH 6.0, 15 min



GTX135574 WB Image

Non-transfected (-) and transfected (+) 293T whole cell extracts were separated by 12% SDS-PAGE, and the membrane was blotted with Hepatitis D virus Large delta protein antibody (GTX135574) diluted at 1:5000.

The HRP-conjugated anti-rabbit IgG antibody (GTX213110-01) was used to detect the primary antibody.



GTX135574 ICC/IF Image

Hepatitis D virus Large delta protein antibody detects Hepatitis D virus Large delta protein protein by immunofluorescent analysis.

Sample: Mock and transfected 293T cells were fixed in 4% paraformaldehyde at RT for 15 min.

Green: Hepatitis D virus Large delta protein stained by Hepatitis D virus Large delta protein antibody (GTX135574) diluted at 1:500.

Blue: Fluoroshield with DAPI (GTX30920).



For full product information, images and publications, please visit our [website](https://www.genetex.com).