

SARS-CoV-2 (COVID-19) Nucleocapsid protein, His tag

Cat. No. GTX135592-pro

Application	WB, ELISA, Lateral Flow, Sandwich ELISA
Species	SARS Coronavirus 2

Reference (3)
Package
100 µg

APPLICATION

Application Note

Recommended antibody pairs for sandwich ELISA :

Capture: GTX635685, Detection: GTX635712 / GTX635688 / GTX635678. or Capture: GTX635679 / GTX635689, Detection: GTX635686-01.

Please notice that detection antibodies need to be conjugated to HRP when paired with capture antibodies. Please contact us for custom HRP-conjugated antibody.

Recommended antibody pairs for Lateral Flow :

Capture: GTX635688, Detection: GTX635686 / GTX637789

Please notice that the detection antibodies need to be conjugated to Gold to function when paired with capture antibodies. Please contact us for custom Gold-conjugated antibody.

Calculated MW 46 kDa. ([Note](#))

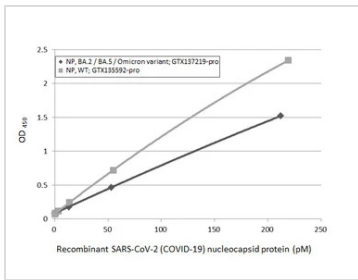
PROPERTIES

Form	Liquid
Buffer	Tris, 500mM NaCl
Preservative	No preservative
Storage	Store as concentrated solution. Centrifuge briefly prior to opening vial. Aliquot and store at -20°C or below. Avoid multiple freeze-thaw cycles. For long-term storage after reconstitution, aliquot and store at -70°C or below. Do not vortex.
Concentration	0.2 mg/ml (Please refer to the vial label for the specific concentration.)
Region/Sequence	C-terminal His tagged full length protein of YP_009724397.2
Expression System	HEK293 cells
Purity	>90%
Conjugation	Unconjugated
Note	For <i>In vitro</i> laboratory use only. Not for any clinical, therapeutic, or diagnostic use in humans or animals. Not for animal or human consumption.



For full product information, images and publications, please visit our [website](#).

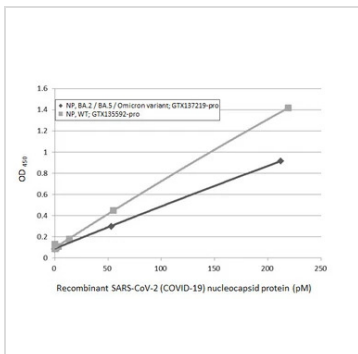
Date 2024 / 04 / 25 Page 1 of 2

DATA IMAGES

GTX135592-pro ELISA Image

Sandwich ELISA detection of recombinant nucleocapsid protein(s) derived from different strains of SARS-CoV-2 virus (ie., Wild type; BA.2 / BA.5 Omicron variant) using antibodies as below.

Capture: SARS-CoV-2 (COVID-19) nucleocapsid antibody [HL5511] (GTX635689) (5 µg/mL)

Detection: SARS-CoV-2 (COVID-19) nucleocapsid antibody [HL448] (HRP) (GTX635686-01) (1 µg/mL)

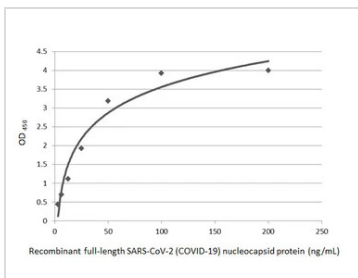

GTX135592-pro ELISA Image

Sandwich ELISA detection of recombinant nucleocapsid protein(s) derived from different strains of SARS-CoV-2 virus (ie., Wild type; BA.2 / BA.5 Omicron variant) using antibodies as below.

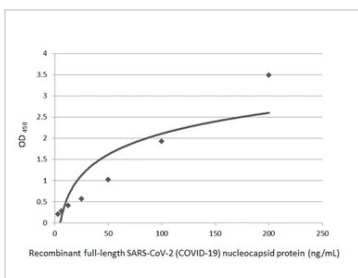
Capture: SARS-CoV-2 (COVID-19) nucleocapsid antibody [HL5410] (GTX635685) (5 µg/mL)

Detection: HRP-conjugated SARS-CoV-2 (COVID-19) nucleocapsid antibody [HL455] (GTX635688) (1 µg/mL)

Please notice that GTX635688 needs to be conjugated to HRP to function as the detection antibody when paired with GTX635685. Please contact us for custom HRP-conjugated antibody.


GTX135592-pro ELISA Image

Sandwich ELISA detection of recombinant full-length SARS-CoV-2 (COVID-19) nucleocapsid protein, His tag protein (GTX135592-pro) using SARS-CoV-2 (COVID-19) nucleocapsid antibody [HL5410] (GTX635685) as capture antibody at concentration of 5 µg/mL and HRP-conjugated SARS-CoV-2 (COVID-19) nucleocapsid antibody [HL455] (GTX635688) as detection antibody at concentration of 1 µg/mL.


GTX135592-pro ELISA Image

Sandwich ELISA detection of recombinant full-length SARS-CoV-2 (COVID-19) nucleocapsid protein, His tag protein (GTX135592-pro) using SARS-CoV-2 (COVID-19) nucleocapsid antibody [HL5410] (GTX635685) as capture antibody at concentration of 5 µg/mL and HRP-conjugated SARS-CoV-2 (COVID-19) nucleocapsid antibody [HL249] (GTX635678) as detection antibody at concentration of 1 µg/mL.



For full product information, images and publications, please visit our [website](https://www.genetex.com).