

# SIGLEC15 antibody

**Cat. No. GTX135600**

|                    |            |
|--------------------|------------|
| <b>Host</b>        | Rabbit     |
| <b>Clonality</b>   | Polyclonal |
| <b>Isotype</b>     | IgG        |
| <b>Application</b> | WB         |
| <b>Reactivity</b>  | Human      |

**Package**  
100 µl, 25 µl

## APPLICATION

### Application Note

\*Optimal dilutions/concentrations should be determined by the researcher.

| Suggested dilution                | Recommended dilution |
|-----------------------------------|----------------------|
| WB                                | 1:500-1:3000         |
| Not tested in other applications. |                      |

**Calculated MW** 36 kDa. ( [Note](#) )

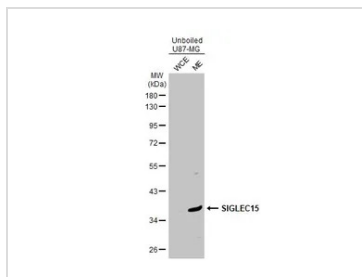
## PROPERTIES

|                      |  |
|----------------------|--|
| <b>Form</b>          | Liquid   |
| <b>Buffer</b>        | PBS, 20% Glycerol  |
| <b>Preservative</b>  | 0.025% ProClin 300   |
| <b>Storage</b>       | Store as concentrated solution. Centrifuge briefly prior to opening vial. For short-term storage (1-2 weeks), store at 4°C. For long-term storage, aliquot and store at -20°C or below. Avoid multiple freeze-thaw cycles.   |
| <b>Concentration</b> | 2.01 mg/ml (Please refer to the vial label for the specific concentration.)  |
| <b>Immunogen</b>     | Synthetic peptide encompassing a sequence within the Intracellular domain of human SIGLEC15. The exact sequence is proprietary.  |
| <b>Purification</b>  | Purified by antigen-affinity chromatography.   |
| <b>Conjugation</b>   | Unconjugated   |
| <b>Note</b>          | For laboratory research use only. Not for any clinical, therapeutic, or diagnostic use in humans or animals. Not for animal or human consumption.<br><br>Purchasers shall not, and agree not to enable third parties to, analyze, copy, reverse engineer or otherwise attempt to determine the structure or sequence of the product. |



For full product information, images and publications, please visit our [website](#).

## DATA IMAGES



### GTX135600 WB Image

Unboiled U87-MG cell extracts (30 µg) were separated by 10% SDS-PAGE, and the membrane was blotted with SIGLEC15 antibody (GTX135600) diluted at 1:500. The HRP-conjugated anti-rabbit IgG antibody (GTX213110-01) was used to detect the primary antibody.



For full product information, images and publications, please visit our [website](https://www.genetex.com).